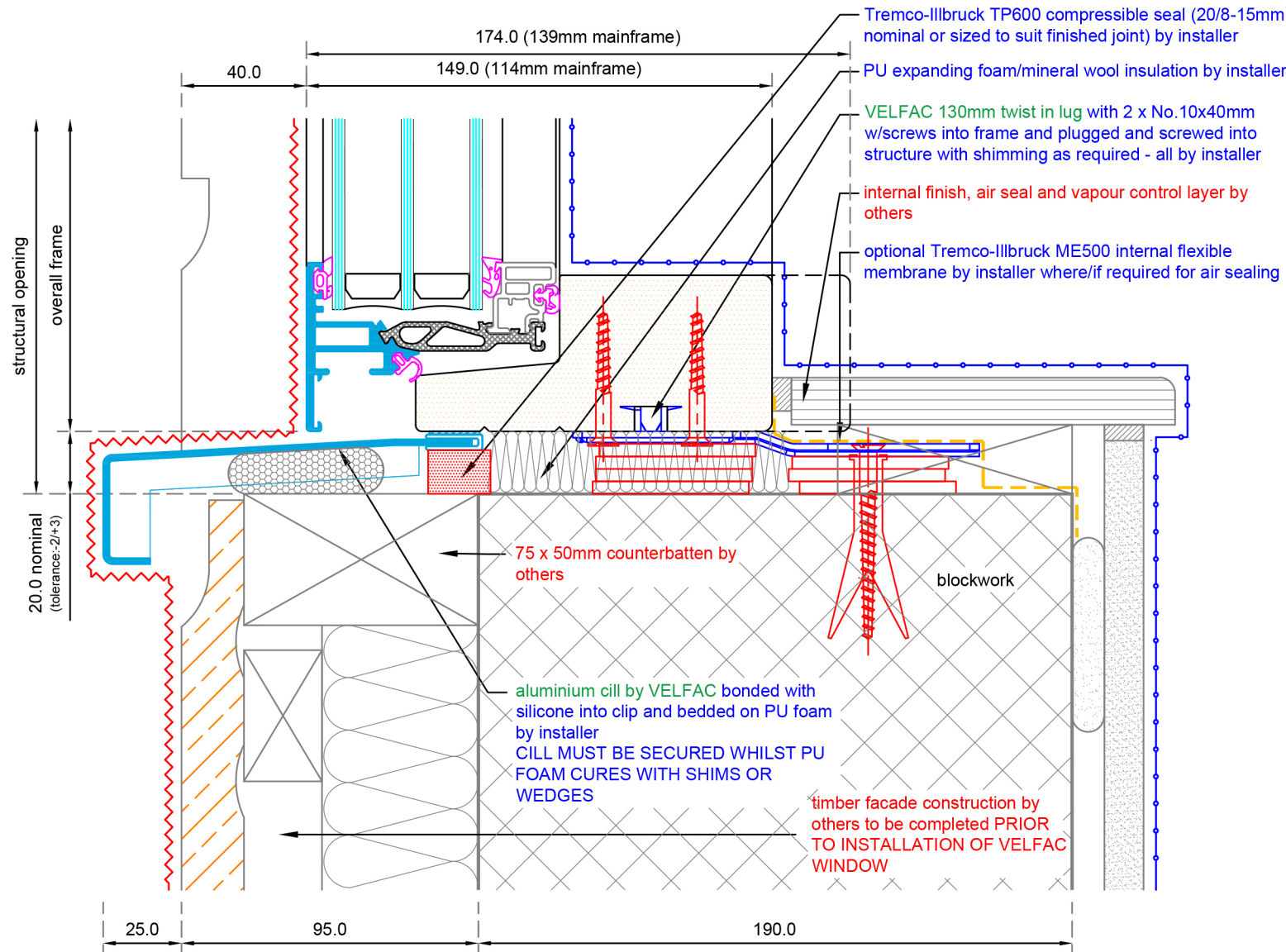


this cill solution is only for use in low rise domestic buildings of less than 4 stories with punched hole windows.



Rev	Date	By	Description
-----	------	----	-------------

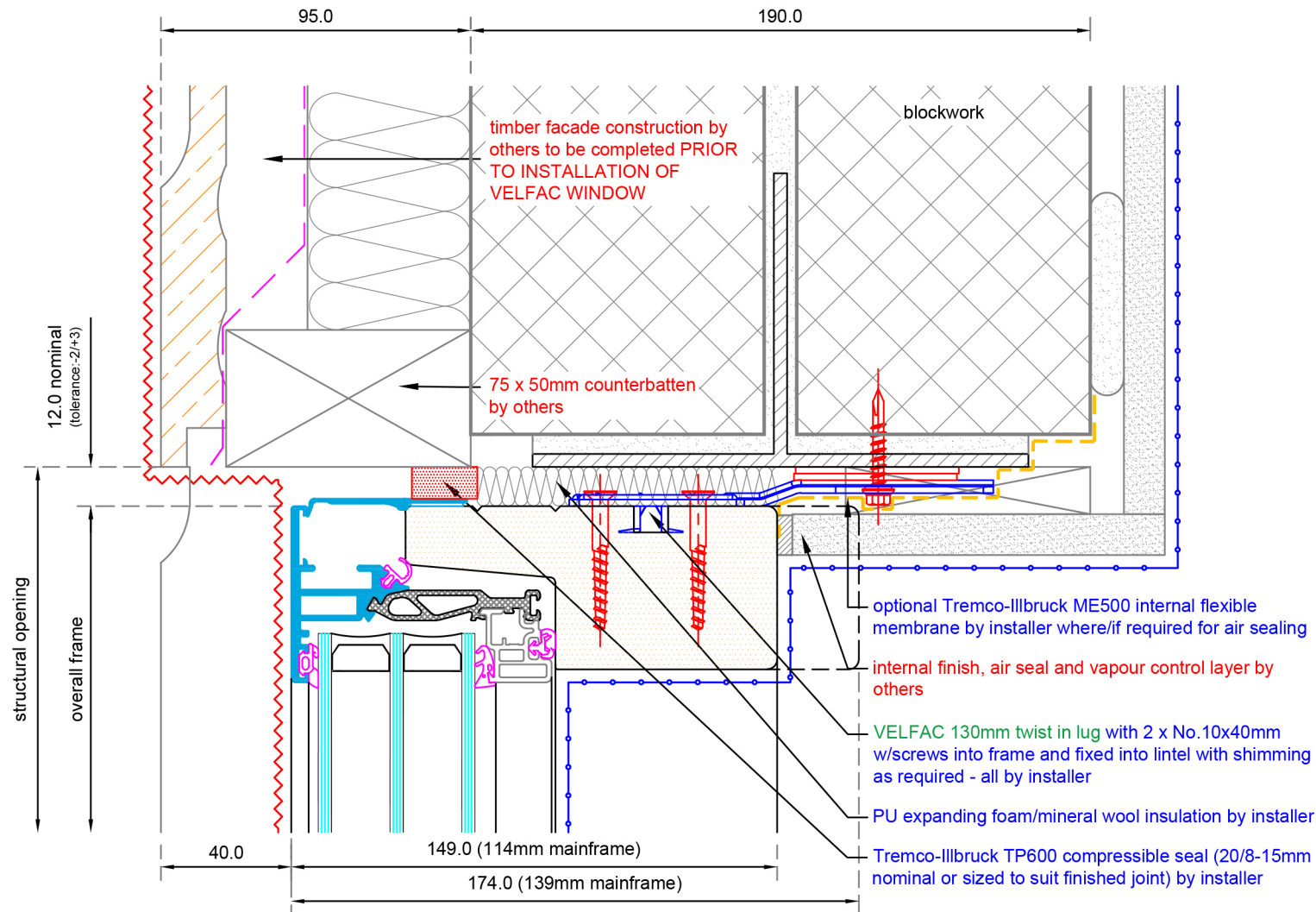


STANDARD INTERFACE DRAWING

Title: VELFAC 200 ENERGY SYSTEM
TYPICAL CLIPPED CILL DETAIL
timber/block masonry

Scale: 1:2 approx. @ A4	Drawing no: V200E.W1.04.A.C.002
Date: January 2017	
Drawn: Studio62	
Status: approved	
	Revision:

© VELFAC Ltd. This drawing must not be copied, reproduced or published in whole or in part for commercial gain without prior written permission of VELFAC

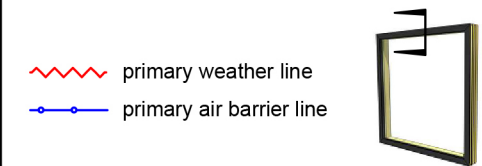


IMPORTANT NOTE: When installing VELFAC windows and accessories, please ensure compliance with national building regulations and British/European standards where necessary. This drawing is for guidance only and the customer must be satisfied that the principles outlined in this drawing are effectively transposed to suit specific project requirements and site conditions.

All dimensions are in millimetres where shown. Do not scale.

NOTES:

1. External weather seal to be either Tremco-Ilbruck joint sealing tape sized to suit finished joint size or ARBOSIL 1090 silicone seal and polyethylene backing rod.
2. Fixings and lugs to be installed strictly in accordance with VELFAC installation guidance.
3. Fixing grounds must be able to withstand all loads transmitted from and through the VELFAC system.



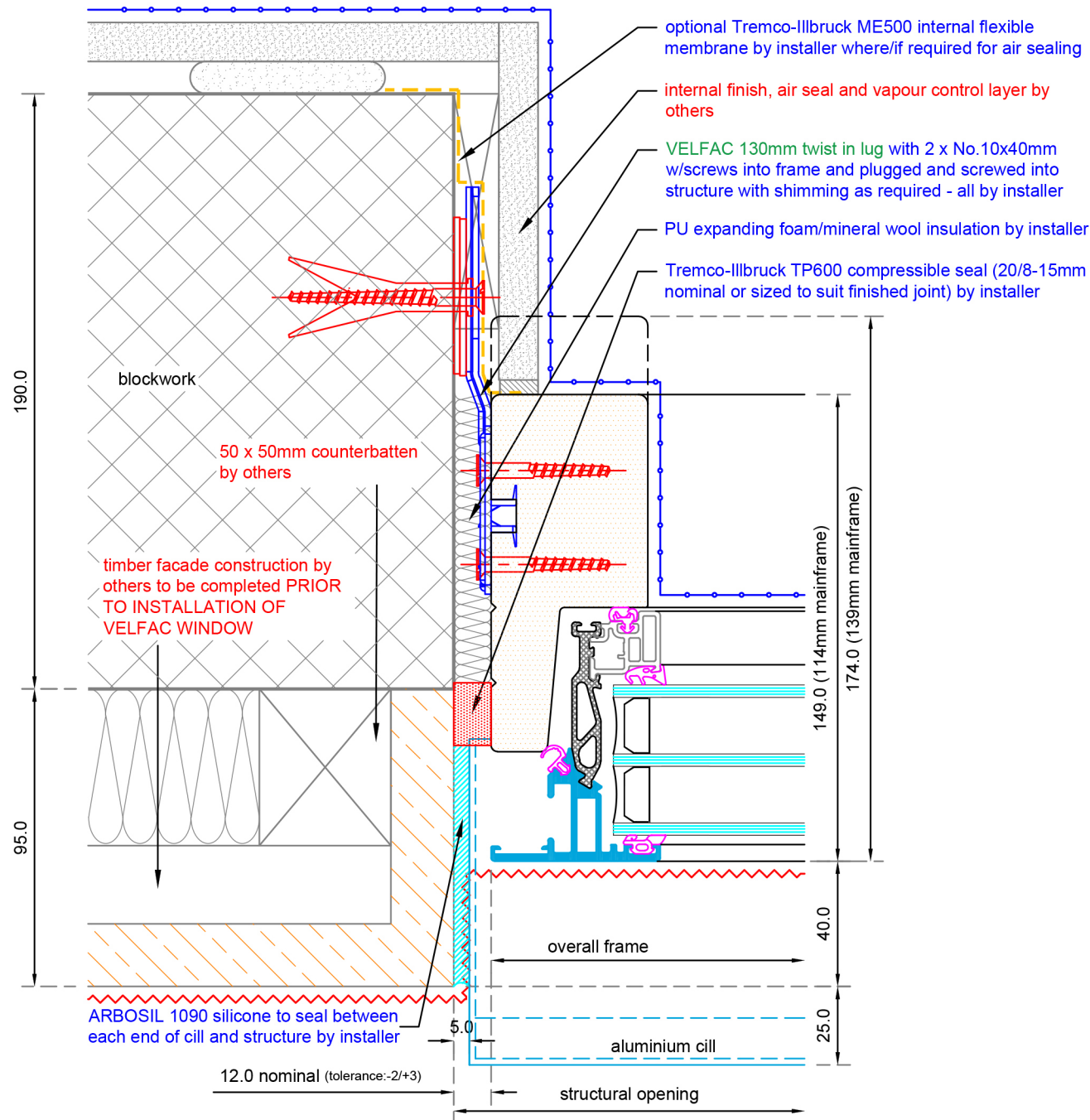
Rev	Date	By	Description
-----	------	----	-------------



Title:
VELFAC 200 ENERGY SYSTEM
TYPICAL HEAD DETAIL
timber/block masonry

Scale: 1:2 approx. @ A4	Drawing no:
Date: January 2017	V200E.W1.04.A.H.001
Drawn: Studio62	
Status: approved	Revision:

© VELFAC Ltd. This drawing must not be copied, reproduced or published in whole or in part for commercial gain without prior written permission of VELFAC

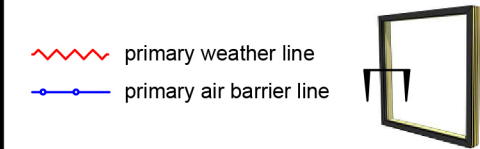


IMPORTANT NOTE: When installing VELFAC windows and accessories, please ensure compliance with national building regulations and British/European standards where necessary. This drawing is for guidance only and the customer must be satisfied that the principles outlined in this drawing are effectively transposed to suit specific project requirements and site conditions.

All dimensions are in millimetres where shown. Do not scale.

NOTES:

1. External weather seal to be either Tremco-Ilbruck joint sealing tape sized to suit finished joint size or ARBOSIL 1090 silicone seal and polyethylene backing rod.
2. Fixings and lugs to be installed strictly in accordance with VELFAC installation guidance.
3. Fixing grounds must be able to withstand all loads transmitted from and through the VELFAC system.



Rev	Date	By	Description
-----	------	----	-------------



Title:
VELFAC 200 ENERGY SYSTEM
TYPICAL JAMB DETAIL
timber/block masonry

Scale: 1:2 approx. @ A4	Drawing no:
Date: January 2017	V200E.W1.04.A.J.001
Drawn: Studio62	
Status: approved	Revision:

© VELFAC Ltd. This drawing must not be copied, reproduced or published in whole or in part for commercial gain without prior written permission of VELFAC