

Fully Certified Doorset Solutions



SWEDOODOR

Contents

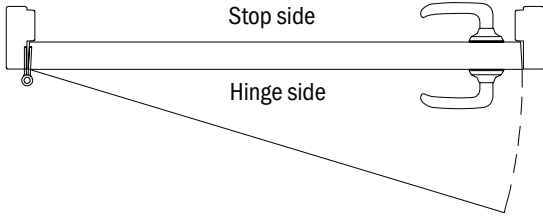
General	1
S ingle Acting doorsets / non-rated, fire, smoke (S) and sound rated	2
D ouble Acting doorsets / non-rated, fire and smoke (S) rated	3

General	Page
Terminology	1:1
Surface treatment	1:2
Maintenance instructions Solid doors (Part 1)	1:3
Maintenance instructions Solid doors (Part 2)	1:4
Installation instructions Solid doors (Part 1)	1:5
Installation instructions Solid doors (Part 2)	1:6
Installation instructions Solid doors (Part 3)	1:7
Installation instructions Solid doors (Part 4)	1:8
Installation instructions Solid doors Drop seals	1:9
Installation instructions Solid doors Flush bolts	1:10
a and b measurements Single Acting doors	1:11
Doors with glass opening	1:12

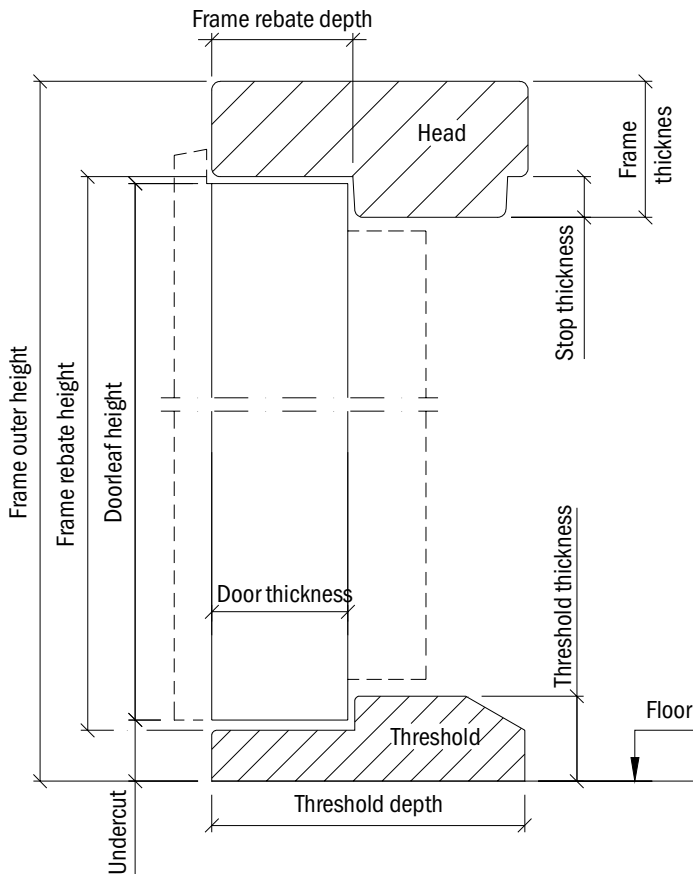
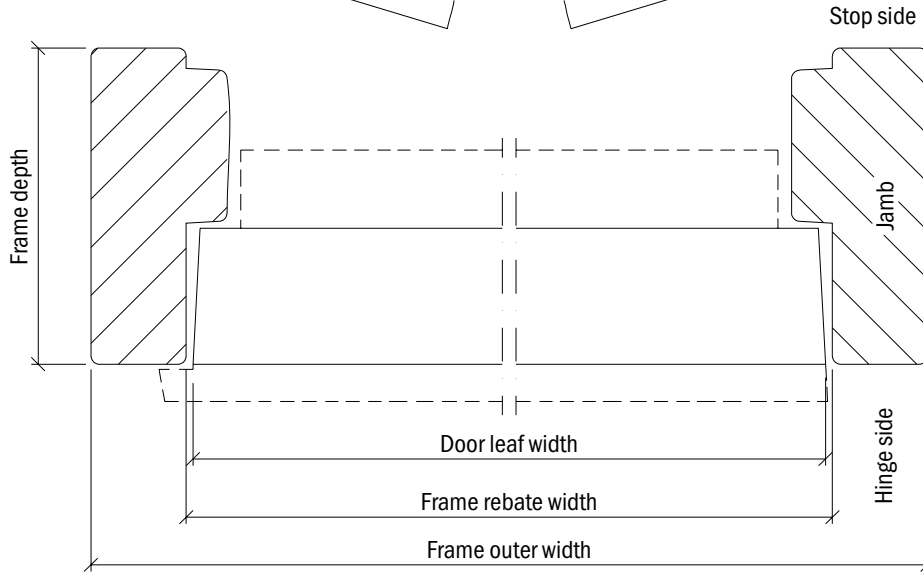
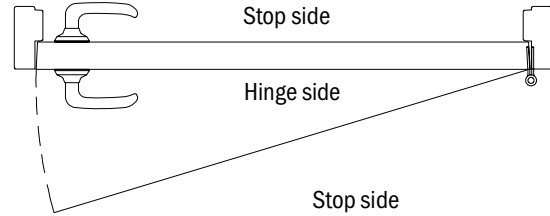
Terminology

1

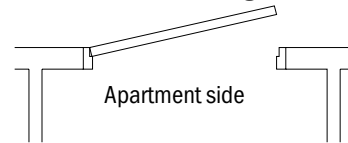
Left handed door



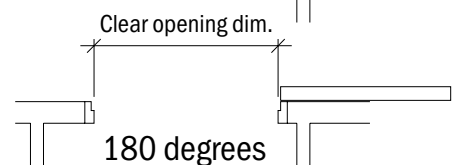
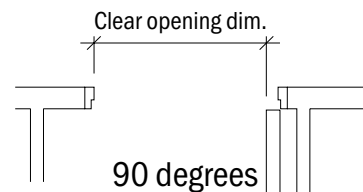
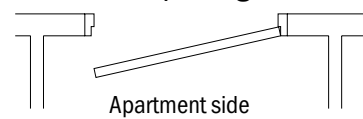
Right handed door



Outward opening door



Inward opening door



Surface treatment

Our wide range of various surfaces makes it possible to meet with functional as well as aesthetical demands.

1

Doors

For painting on site Untreated or primed hardboard (Internal and solid doors).

Painted Standard colour: white (NCS S 0502-Y gloss ca. 20-35). Surface treatment classification T3-C acc. SS 056812. Alternatively other colours from the NCS system.

Veneered Ash, beech, rotary cut birch, oak, okume, cherry, maple and mahogany.
Clear lacquered.
Alternatively other veneer types and surface treatments on request.
Surface treatment classification KE3-C acc. SS 056812.

Laminate Standard laminate acc. page 1:15 Laminate standard colour chart with NCS references.
Alternatively other colours and surface structures on request.

Timber frames

For painting on site Untreated or primed pine frame.

Painted Standard colour: white (NCS S 0502-Y gloss ca. 20-35). Surface treatment classification T3-C acc. SS 05 6812. Alternatively other colours from the NCS system.

Veneered Ash, beech, rotary cut birch, oak, okume, cherry, maple and mahogany.
Clear lacquered.
Alternatively other veneer types and surface treatments on request.
Surface treatment classification KE3-C acc. SS 056812.

Maintenance instructions Solid doors

1

As a guide for choice of materials for cleaning and repairing of joinery products, we give a short description of the surface treatment applied in the factory prior to delivery. You will find further information of detergents as well as paints and other surface treatment materials recommended by us.

Painted door leaves

The paint applied is a two component acid hardening finishing coat (convertible coating) which meets with high demands for body, resistance against abrasions, wear, and appearance and also provides a high degree of resistance against most household chemicals, grease and solvents.

Cleaning:

Use common detergents, for example a washing-up detergent. Avoid the use of anything that can scratch or dissolve the surface. Therefore never use solvents, scouring powder, steel wool etc. Moisten the surface from below and upwards, but clean from the top, downwards. Otherwise there is the risk of getting streaks. After-dry with soft cloth.

Maintenance:

In general no cleaning is required unless damage or abnormal wear has occurred.

Repair:

Minor damages can be repaired by using a fine brush with lacquer in matching shades and glosses. Large damages demands complete sanding and total re-lacquering, alternatively repair with plastic wood which is sanded and laquered.

Veneered door leaves

The surface has excellent resistance against most chemicals, grease and solvents. It provides reasonable resistance to wear, but can get scratched by sharp objects.

Cleaning:

Use common detergents, for example a washing-up detergent. Use a sponge or soft cloth, well wrung out. Wipe from top, downwards. Dry after application. Do not use an excess of water, nor anything that might scratch or dissolve the lacquer. Therefore solvents, scouring powder, steel wool etc shall not be used.

Maintenance:

In general no cleaning is required unless damage or abnormal wear has occurred. Products used for furniture maintenance, e.g. furniture polish and wax polish, can be used but is normally not required.

Repair:

Minor damages can be repaired by using a fine brush with lacquer in matching shades and glosses. Large damages demands complete sanding and total re-lacquering, alternatively repair with plastic wood which is sanded and laquered.

Laminate door leaves

The surface has excellent resistance against most chemicals, grease and solvents. It provides reasonable resistance to wear, but can get scratched by sharp objects.

Cleaning:

Water with soap or common synthetic detergents will remove most stains. Particularly grave soiling requires treatment with a concentrated detergent, methylated spirits, ligroin or nitro-cellulose thinners. Never use steel wool or similar. Avoid cleaning with scouring products. N.B. When using petroleum based solvents, keep away from sealing tape, as its properties can be damaged.

Maintenance:

Cleaning only.

Repair:

Minor damages, scratching, etc., can successfully be mended with a repair compound, especially produced for laminate surfaces

Maintenance instructions Solid doors

Painted wooden frames

Surface treatment is made with an environmental, water based finishing coat which well complies with the high standards for painted frames.

Cleaning:

Use common detergents, except alkalic products, for example a washing-up detergent. Do not use a product that can scratch or dissolve the surface. Therefore avoid solvents, scouring powder, steel wool etc. After-dry

Maintenance:

In general no cleaning is required unless damage or abnormal wear has occurred.

Repair:

Minor damages can be repaired with a fine brush with Swedoor's touch up paint.
Larger damages generally require a total re-paint.

Clear lacquered wooden frames / Veneered wooden frames

Surface treatment is made with an environmental, water based clear lacquer which well complies with the high standards for clear lacquered frames.

Cleaning:

Use common detergents, except alkalic products, for example a washing-up detergent. Do not use a product that can scratch or dissolve the surface. Therefore avoid solvents, scouring powder, steel wool etc. After-dry.

Maintenance:

In general no cleaning is required unless damage or abnormal wear has occurred.

Repair:

Minor damages can be repaired with a fine brush with Swedoor's touch up paint.
Larger damages generally require a total re-paint.



SWEDOOR

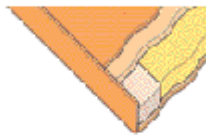
Construction

Core options - non fire

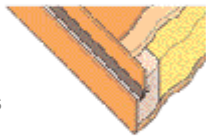


40mm
Non-rated

Core options - fire doors

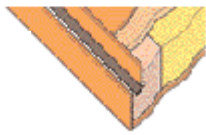


40mm
FD30s

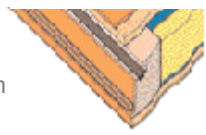


62mm
FD60s

Acoustic doors

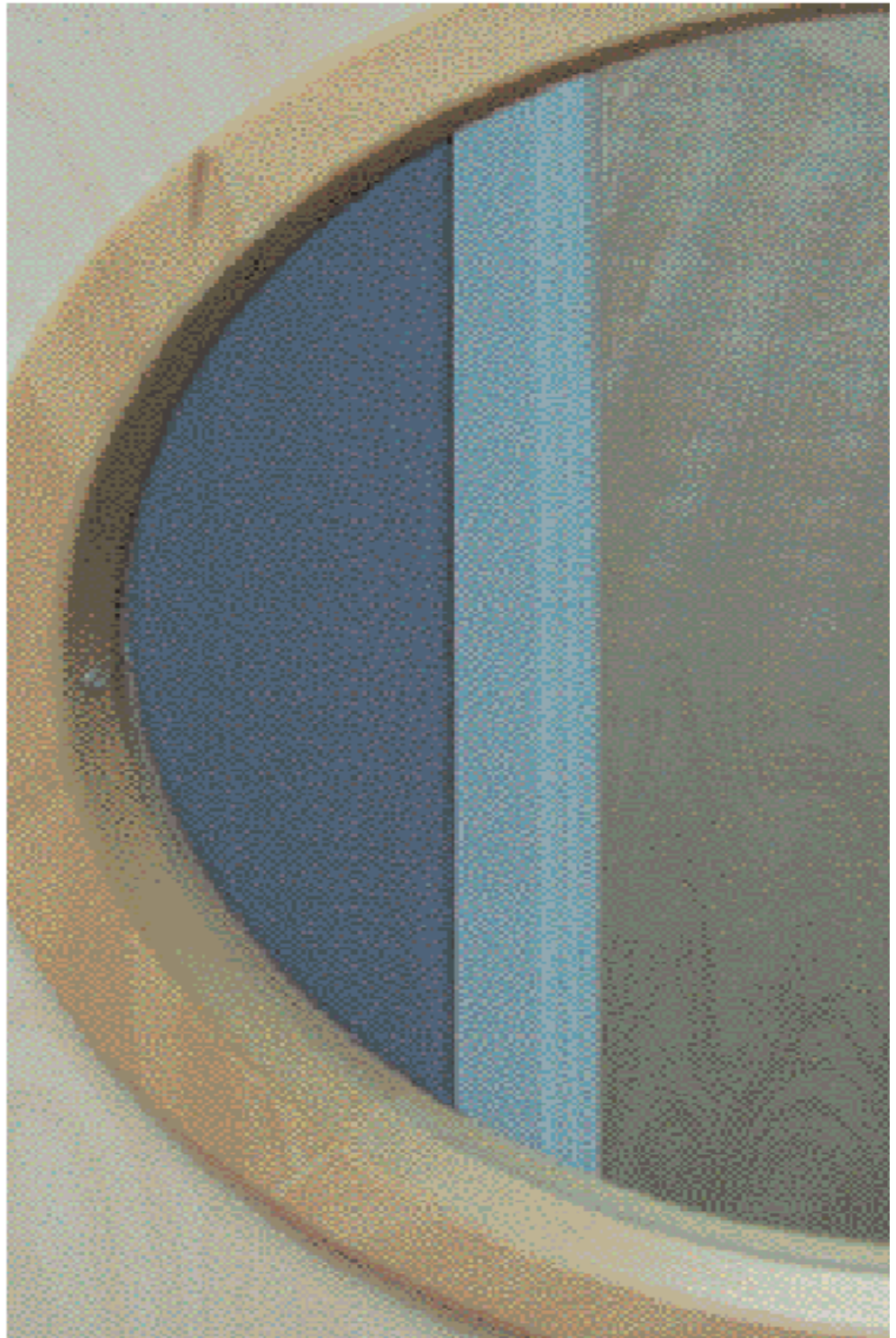


62mm
38dB
FD30s
FD60s



62mm
44dB
FD30s

40mm Thick doors are also available as 27dB & 33dB Acoustic rated doorset Options



**Architectural
Doors &
Windows
Limited**

Installation instructions

Frame assembly / installation - solid doors (Part 1)

1

Assembling technically approved doors

- Doors with a fire rating and doors with a sound-proof rating must be assembled with particular care to ensure they retain the desired performance properties.
- This assembly instruction forms part of the approval certificate issued by IFC.
- It is not permitted to modify the door leaf or frame.

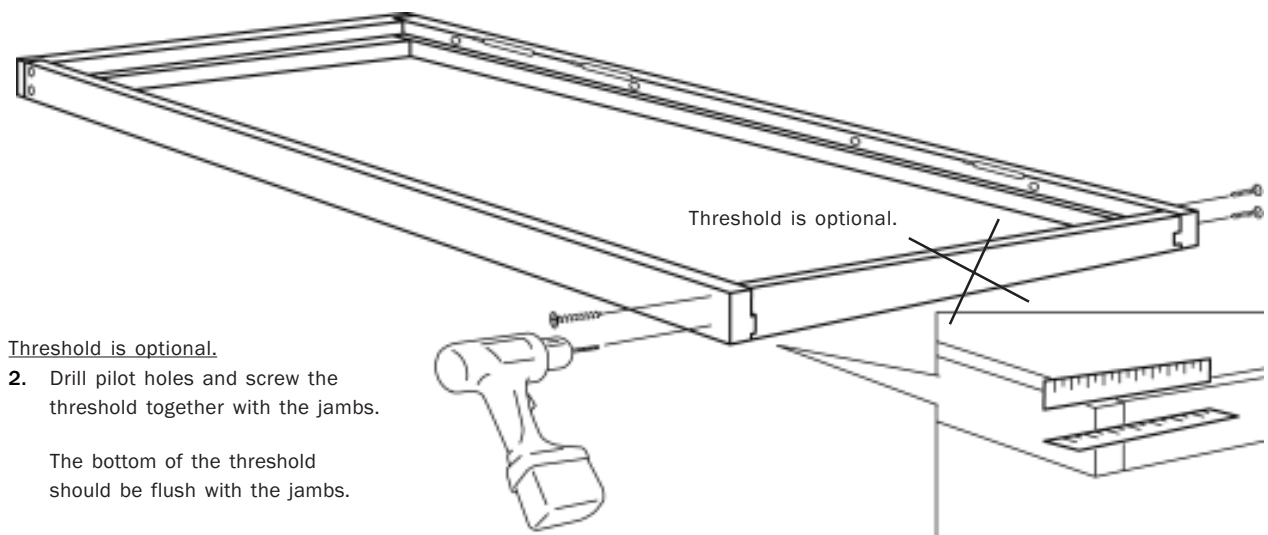
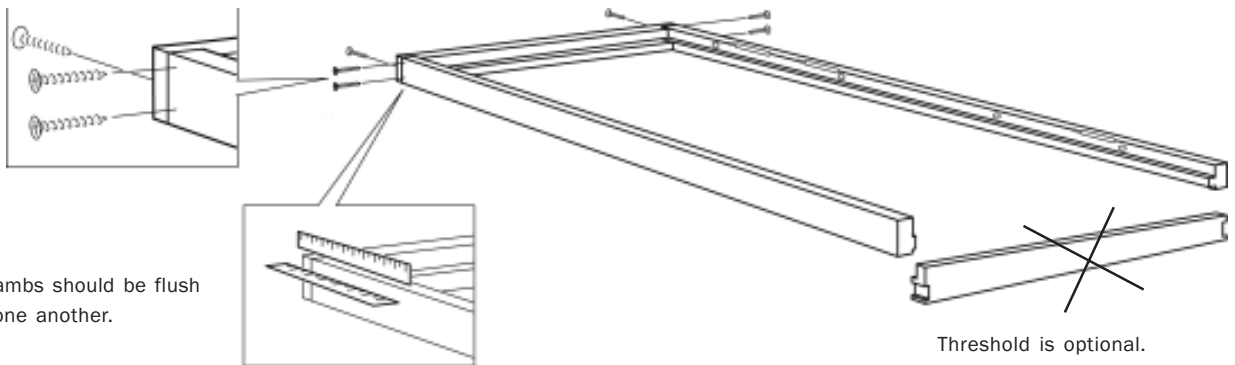
Manufacturer's Assurance

Our technically approved products are manufactured in accordance with the technical approval issued by IFC and related documentation. The technical approval number can be found on the inspection plate.

A. Frame assembly

If the frame is delivered pre-assembled, continue to part B, frame installation.

1. Screw or nail the frame head together with the jambs. Use 2 screws or nails from each side plus 1 in a central position from the upper edge.



Please note!

Standard under cuts are for frames placed directly on the flush finished floor.

If fitted otherwise consideration must be taken to the resulting distance to the bottom of the door leaf.

This can be done by cutting frame jambs or by using door leaves with adjusted height.

NB! To comply with fire certification, FD30S and FD60S must have a max. 3 mm under cut.

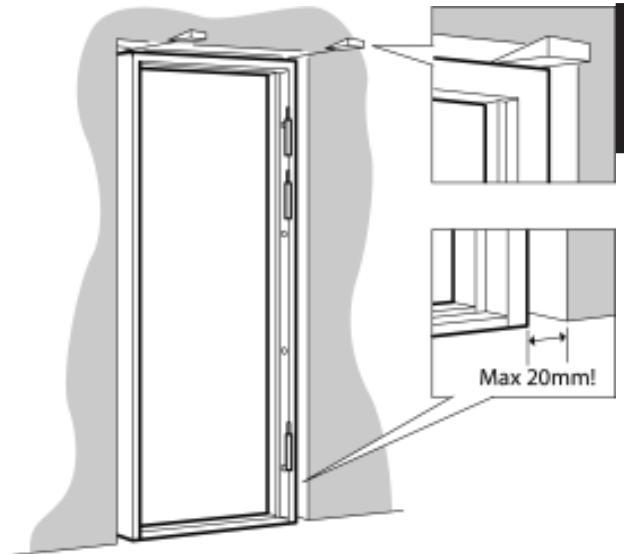
Installation instructions

Frame assembly / installation - solid doors (Part 2)

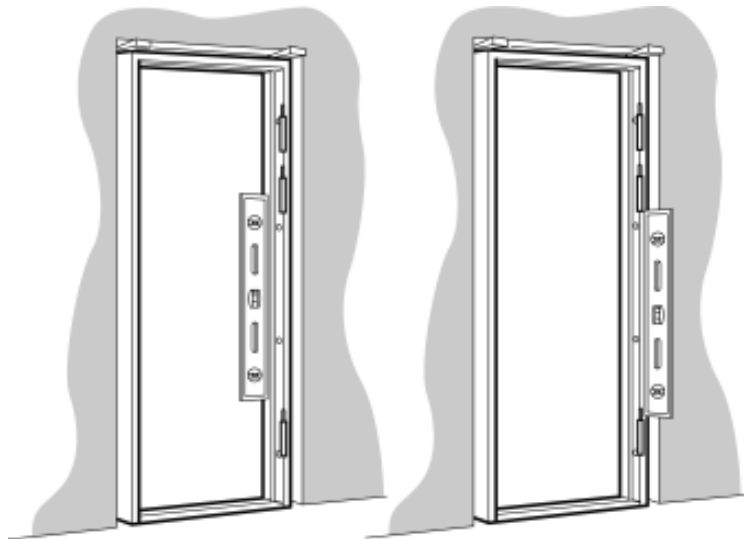
1

B. Frame installation

1. Centre the frame in the wall opening. The gap between the frame and the wall should be about 7-10 mm, but in any case, should not exceed 20 mm on each side.
If the gap exceeds this, the wall opening should be made smaller in order to avoid impairing the door assembly's functions.
2. Use two wedges to temporarily fit the frame into the wall opening. The wedges are placed directly above the frame's jambs.

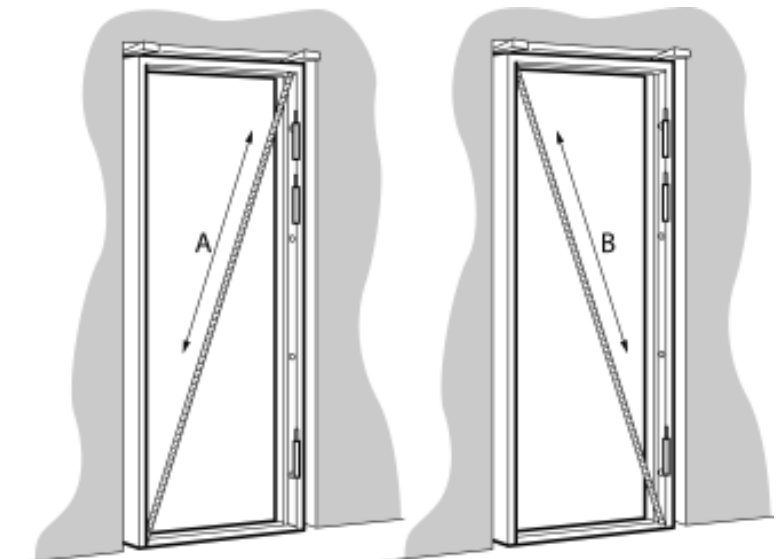


3. Adjust the vertical positioning of the hinge side rebate.



4. Adjust the vertical positioning of the hinge side leading edge.

5. Adjust the diagonals.
The diagonals should be equal in length (A=B).



Installation instructions

Frame assembly / installation - solid doors (Part 3)

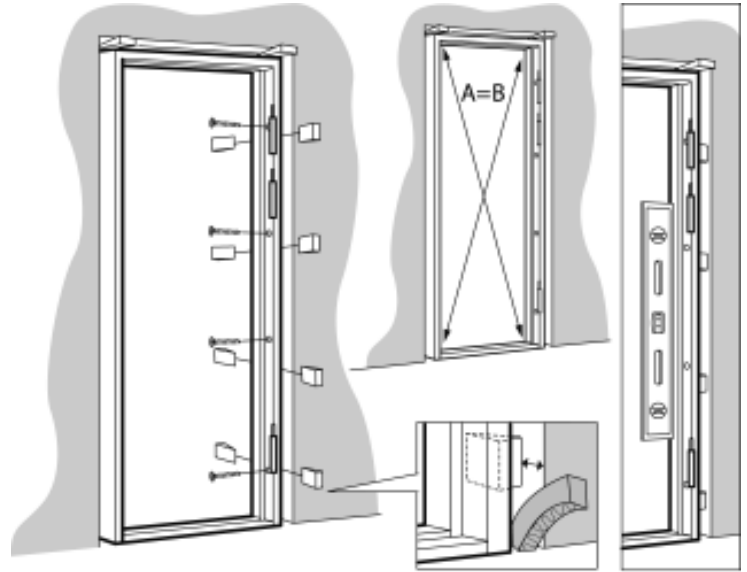
1

6. Screw the hinge side of the frame into the wall opening.

Use one wedge for each affixation point (8 pcs).
Use a carpenter's level to check that the jamb is straight.

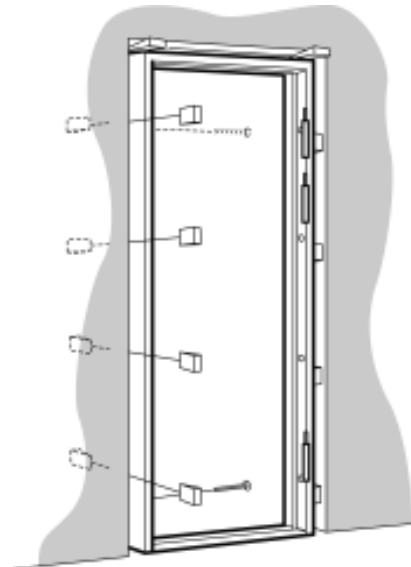
Adjust the jamb as required using wedges or a frame screw.

The wedges should be approximately 20 mm shorter than the frame depth (to leave space for sealing, see step 10).



7. Screw the strike plate side of the frame into the wall opening.

- a. Use one wedge at each affixation point (8 pcs).
- b. Affix the lower or upper edge of the strike plate side with a screw.
- c. Hang the door leaf.
- d. Adjust the strike plate side using the door leaf.



Alt. 1

Even gap between frame and door leaf when the door is ajar.

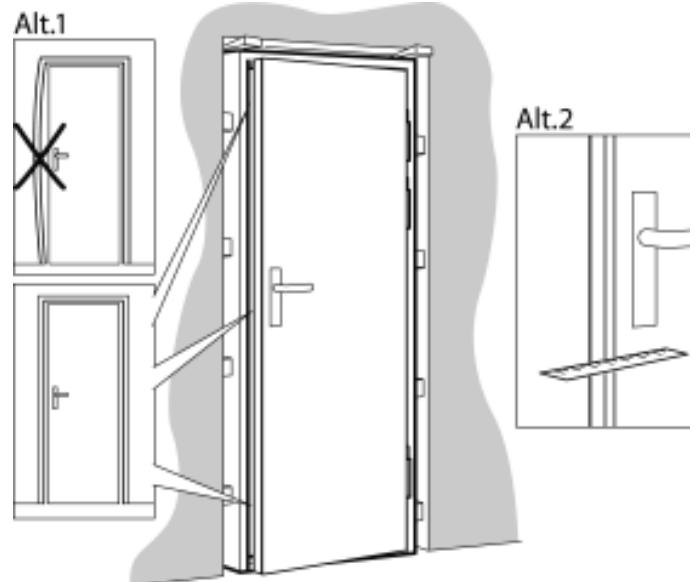
Alt. 2

Can also be performed on a closed door, where the door leaf should be flush with the jamb.

In both cases it is important that the gap is checked at several points along the height of the door.

NB!

SWEDOOR doors do not have hardwood lippings and should not be modified by hand on site, ie NO PLANING.

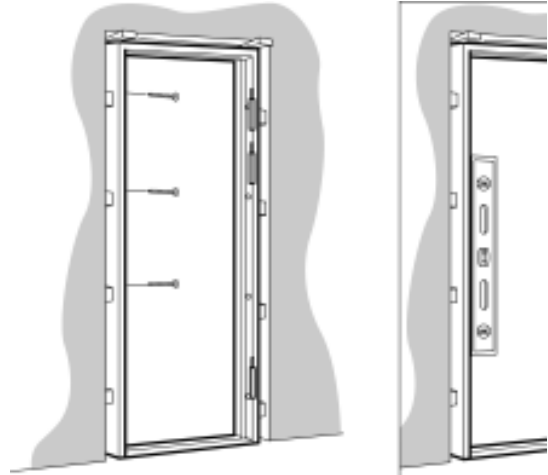


Installation instructions

Frame assembly / installation - solid doors (Part 4)

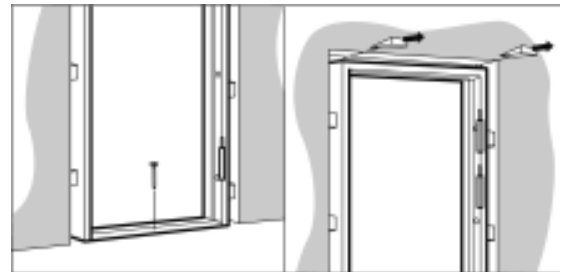
1

8. Screw in the remaining screws on the strike plate side. Use a carpenter's level to check that the jamb is straight. Adjust the jamb using wedges or a frame screw as required.



9. Screw the threshold into the floor using 1 screw on the threshold's rebate.

Remove the wedges placed directly above the jambs of the frame.



DREVSUM = FOAM SEALANT

10. For fire-rated and sound-proofing-rated doors.

Very carefully apply a seal of fire-resistant material (e.g. rockwool) between the frame and the wall.

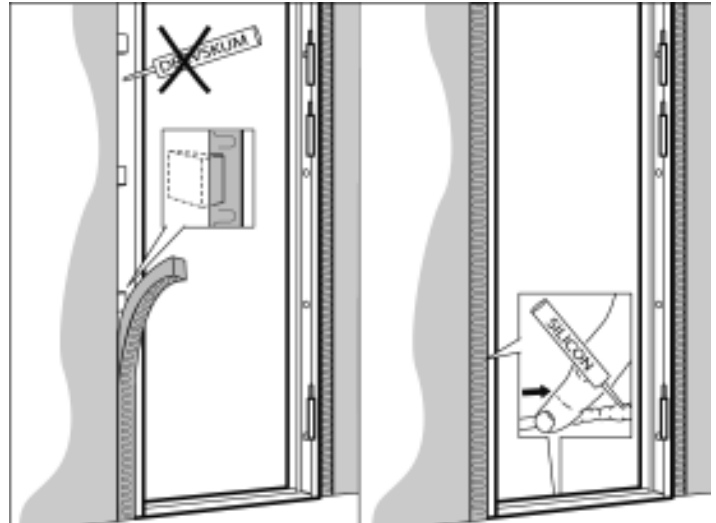
This should also be done above and in front of the wedges.

Do not use foam sealant!

11. For sound and heat insulating doors, a thin layer of elastic sealant (e.g. silicon) should be applied between the frame and the wall, and between the threshold and the floor.

This should be done on at least one side.

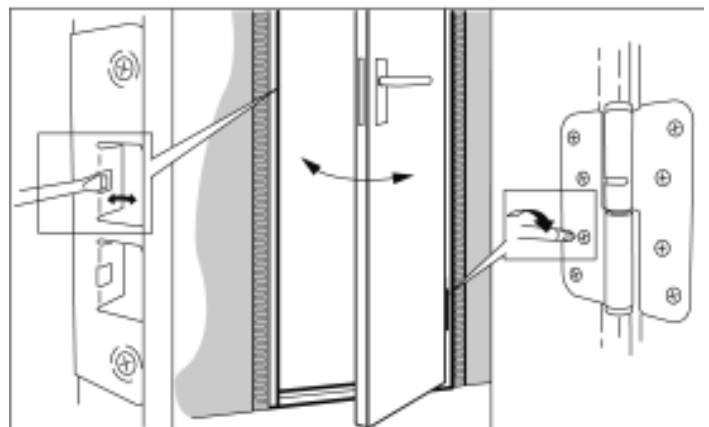
To avoid condensation forming on heat insulating doors, the sealant (e.g. silicon) should be applied on the "warm side".



12. Adjust the strike plate as needed.

13. Check that the door assembly closes correctly by opening and closing the door a few times.

14. Once you have finished installing the door, tighten the screws on the hinges once more. This should be repeated after 3 months, and thereafter once a year.



Installation instructions

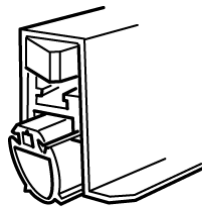
Drop seals

1

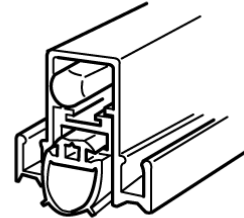
Drop seals

The first steps are the same for types A, B, C

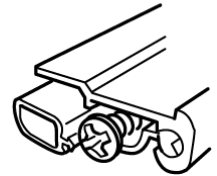
- 1) Mark the activation pin with chalk or similar.
- 2a) Close the door to establish the positioning mark for the nail.
- 2b) Hammer the nail into the frame. (For wooden frames only).
- 3) The rubber profile is cut down to 2 mm at each end.



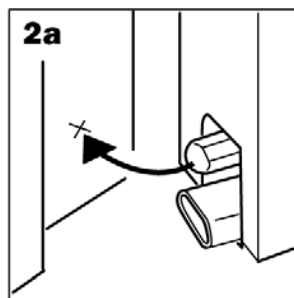
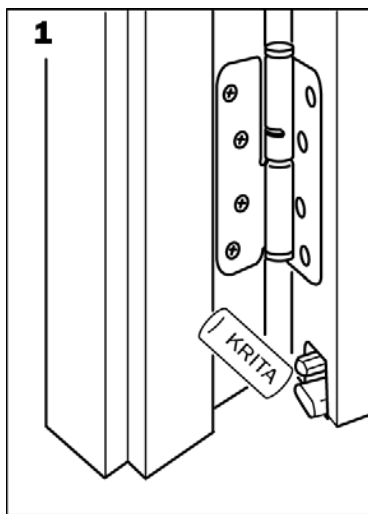
Typ A



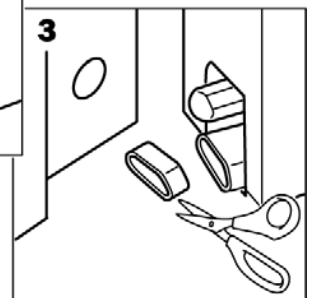
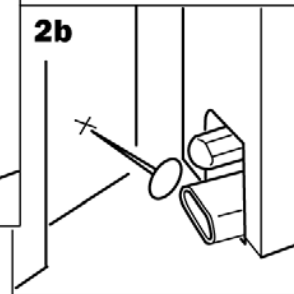
Typ B



Typ C



KRITA = CHALK

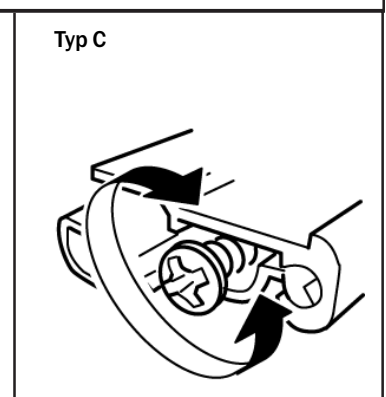
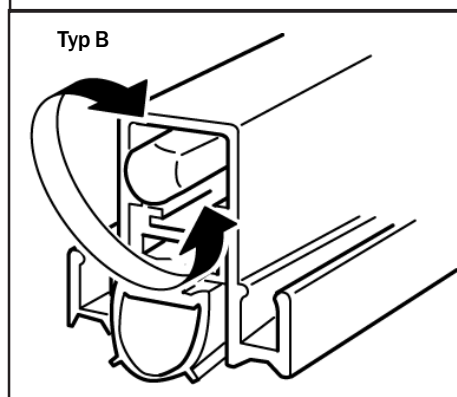
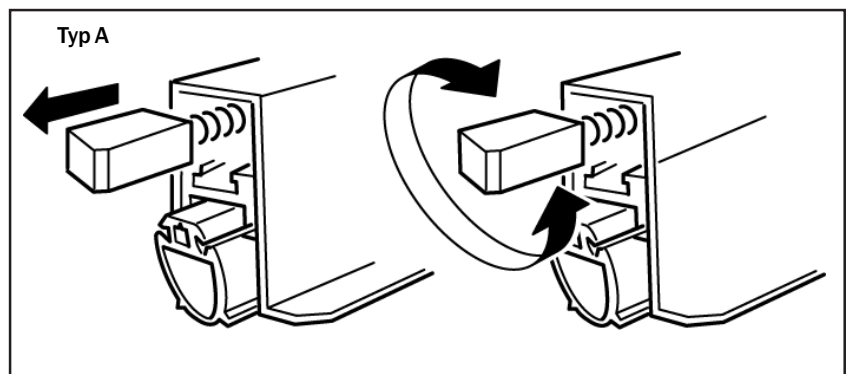


Adjustment

In order to ensure the correct seal function, the activation pin must be adjusted to the correct position.

Note!

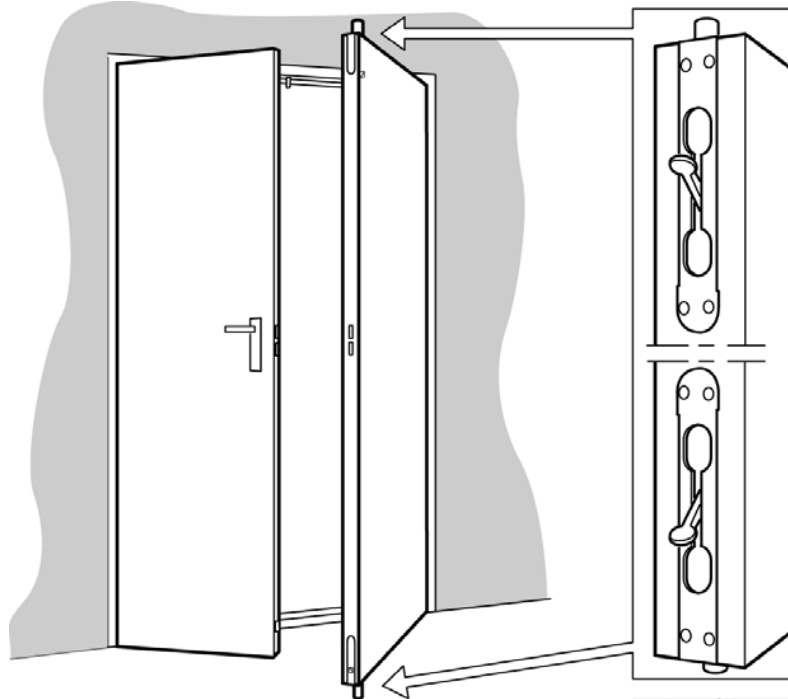
Do not overextend the activation pin. Once correctly adjusted, the threshold should only drop when the door is closed and rest lightly against the floor. If the activation pin is overextended this may cause the sealing profile to trail on the floor and damage the mechanism.



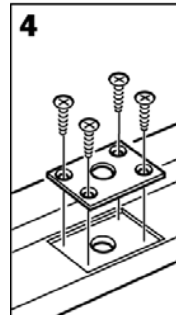
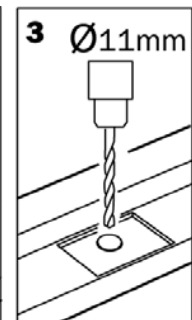
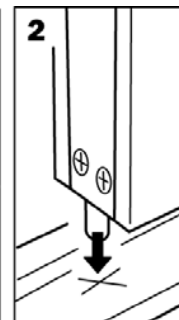
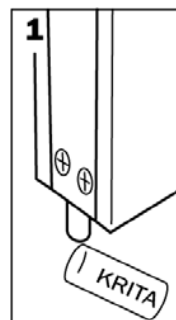
Installation instructions

Manual flush bolts

Manual flush bolts

1


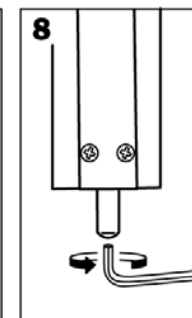
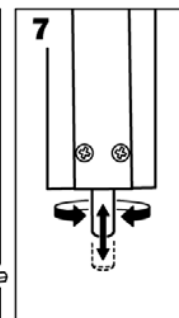
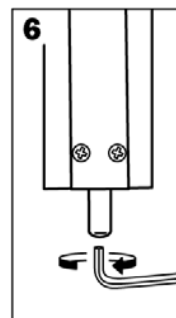
- 1) Mark the activation pin with chalk or similar
- 2) Close the door and activate the ends of the bolt.
- 3) Drill holes for the lock in the frame head and the threshold.
Make a depression for the lock plate.
- 4) Attach the lock plate with screws.



KRITA = CHALK

Adjust the lock mechanism as needed

- 6) Loosen the stop screw
- 7) Adjust the bolt length.
- 8) Tighten the stop screw.

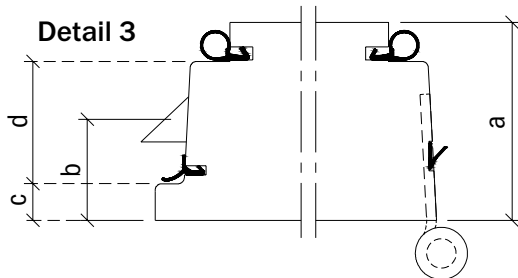
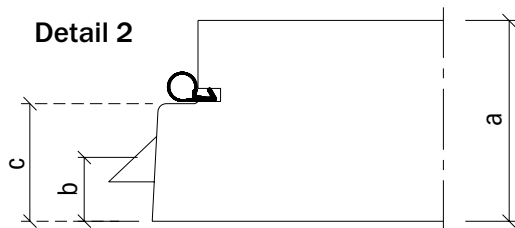
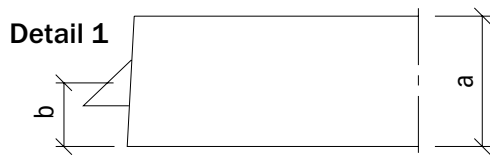


a and b measurements

Single Acting Doors

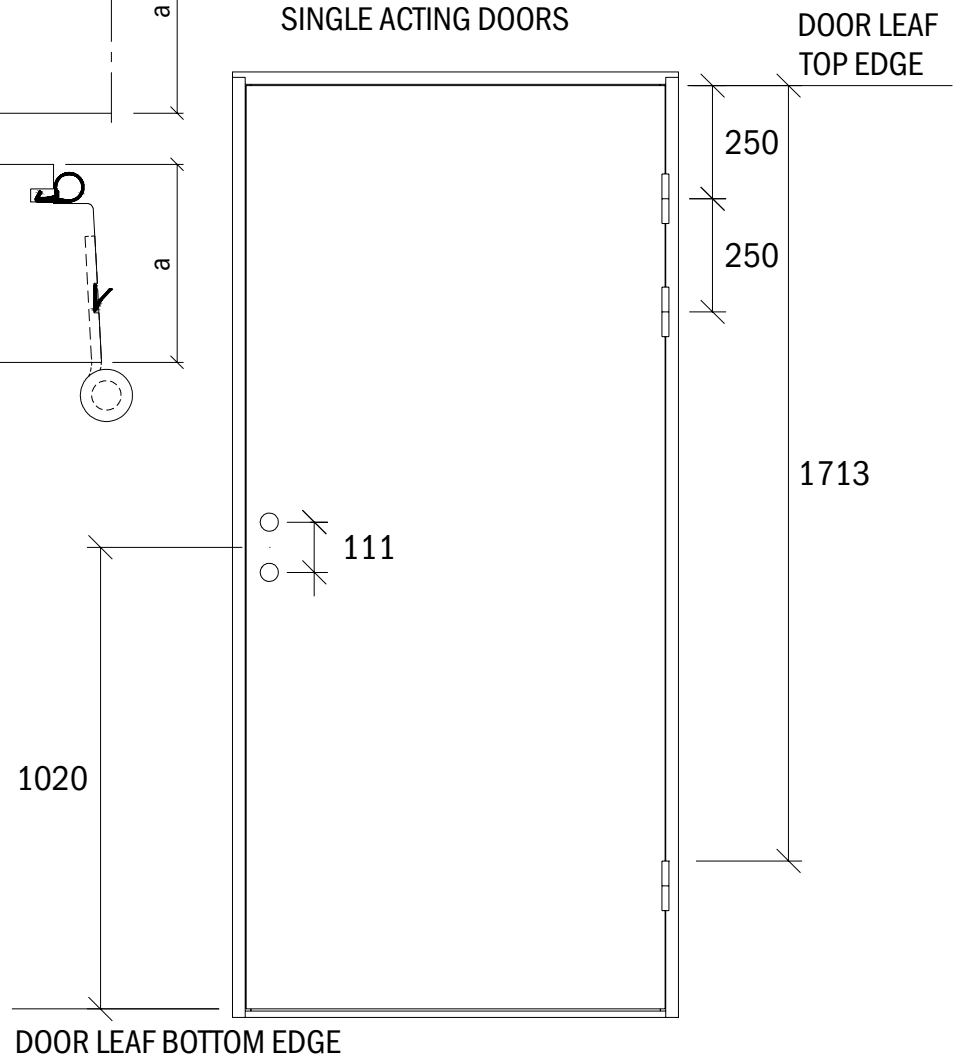
1

Door type	Page	a measure	b measure	c measure	d measure	Detail
Single Acting doors non-rated	2:1	40	19	-	-	1
Single Acting doors fire rating FD30S	2:2	40	19	-	-	1
Single Acting doors fire rating FD30S, sound rating Rw 27dB	2:3	40	19	-	-	1
Single Acting doors fire rating FD30S, sound rating Rw 33dB	2:4	40	19	-	-	1
Single Acting doors fire rating FD30S, sound rating Rw 38dB	2:5	62	19	36	-	2
Single Acting doors fire rating FD30S, sound rating Rw 43dB	2:6	62	34	12	37.5	3
Single Acting doors fire rating FD60S	2:7	62	19	36	-	2
Single Acting doors fire rating FD60S, sound rating Rw 38dB	2:8	62	19	36	-	2



Standard location ironmongery M21

SINGLE ACTING DOORS

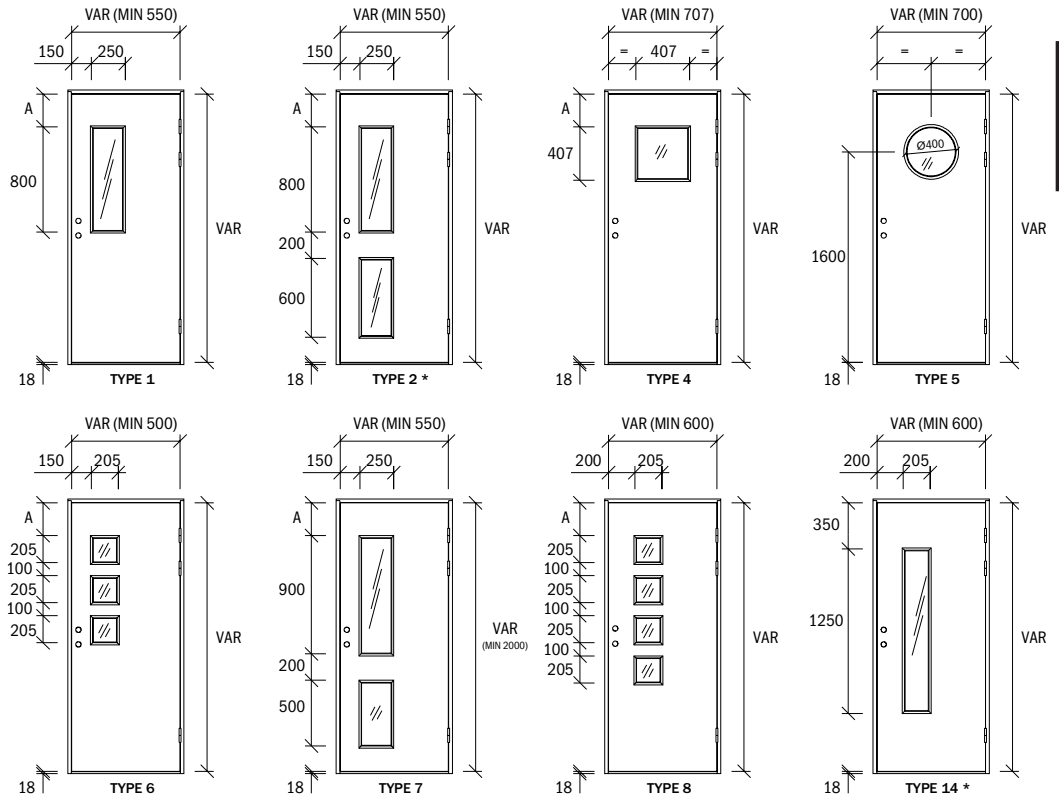


Doors with glass opening

Glass opening

A = Variable,
min 250 mm.

Other sizes are optional at extra cost.



* DDA compliant vision panel.

TYPE 7 and Type 14 glass Openings are only Certified up to 33dB Acoustic rating

The Other glass Openings are Certified up to 38dB Acoustic Rating

Measures shown are for glass aperture cut out (visible area is less)

Special glass

To maintain the stability of the door the distance from doorleaf edge to aperture should be minimum 150 mm, and at top of doorleaf a minimum of 200 mm.

Glass

As standard the doors are delivered glazed.

Glass bead

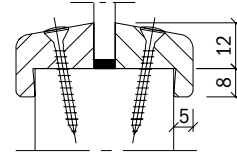
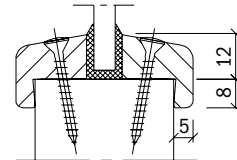
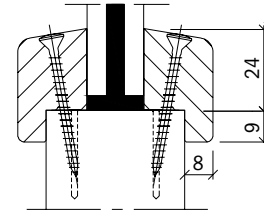
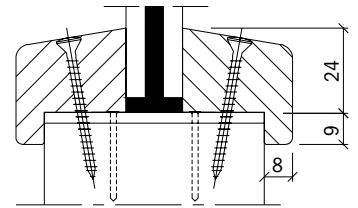
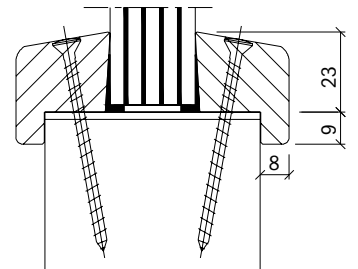
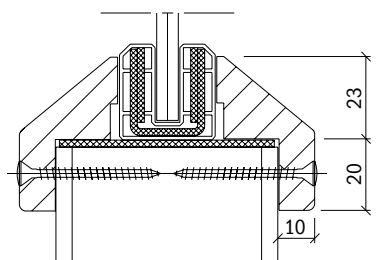
Door surface		Glazing bead	Cover bead
Veneered doors	Ash Beech Birch Cherry Mahogany Maple Oak Okume	Birch Beech Birch Beech Mahogany Birch Oak Mahogany	Birch Beech Birch Beech Mahogany Birch Oak Mahogany
Doors for painting	Untreated Primed Painted	Beech Beech Beech	Beech Beech Beech
Door surface	Door edge lipping	Glazing bead	Cover bead
Laminate doors	3 mm PVC edge lipping "Grey" 3 mm PVC edge lipping "Dark Grey" 3 mm PVC edge lipping "White" 3 mm PVC edge lipping "Black" 3 mm PVC edge lipping "Mahogany" 3 mm PVC edge lipping "Beech" 3 mm PVC edge lipping "Birch" 3 mm PVC edge lipping "Oak"	Painted grey Painted dark grey Painted white Painted black Mahogany Beech Birch Oak	Painted grey Painted dark grey Painted white Painted black Mahogany Beech Birch Oak

1

Glass mounting

1

Rating	Page	Glass type	Det.
Non-rated	2:1	6 mm Toughened glass.	1
Non-rated Rw 33dB		6 mm Toughened glass	1
FD30 (S)	2:2 2:2	6 mm G.W.S.P.P. glass. 6 mm Pyran.	2
FD30 (S)	2:2	17 mm Contraflam.	3
FD30S/ Rw 27dB	2:3 2:3	6 mm G.W.S.P.P. glass. 6 mm Pyran.	2
FD30S/Rw 27dB	2:3	17 mm Contraflam.	3
FD30S/ Rw 33dB	2:4 2:4	6 mm G.W.S.P.P. glass. 6 mm Pyran.	2
FD30S/Rw 33dB	2:4	17 mm Contraflam.	3
FD30S/Rw 38dB	2:5	17 mm Contraflam.	4
FD 60 S	2:7	6 mm G.W.S.P.P.	6
FD60 (S)	2:7	6 mm Pyran.	6
FD60 (S)	2:7	17 mm Contraflam.	4
FD60 (S)	2:7	24 mm Contraflam.	5
FD60S/Rw 38dB	2:8	17 mm Contraflam.	4
FD60S/Rw 38dB	2:8	24 mm Contraflam.	5

Fig 1.

Fig 2.

Fig 3.

Fig 4.

Fig 5.

Fig 6.


Doorset Solutions for numerous applications

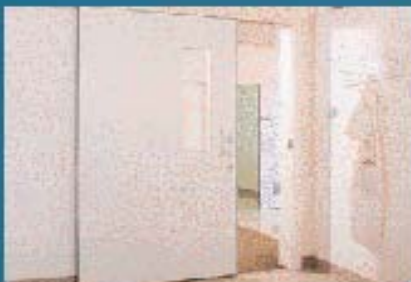


SWEDOOR



Sound environment

From years of research and development, the Swedoor HP acoustic range is an unrivalled doorset for high performance in sound insulation, achieved in a low weight, economical and attractive door.



Healthcare environment

Swedoor HP doorsets are precision engineered to meet the highly specialised requirements of modern health care premises for robust, durable and hygienic doors, and are available in a very attractive range of modern finishes.



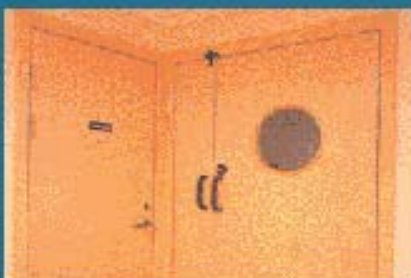
Student accommodation

Superbly engineered doorsets robust and durable enough to cope with the demands and abuses that are imposed by student accommodation without losing out on appearance.



School environment

Swedoor HP doorsets are ideal in educational establishments. The composite door stands up to the daily bashing from school pupils and the bright colours work well for aesthetic purposes.



Office environment

Swedoor HP office doorsets make an impression on corporate colleagues. These high performance doorsets meet commercial building requirements for fire resistance, sound insulation and durability.

ADW

**Architectural
Doors &
Windows
Limited**

Contents

G eneral	1
S ingle Acting doorsets / non-rated, fire, smoke (S) and sound rated	2
D ouble Acting doorsets / non-rated, fire and smoke (S) rated	3

Single Acting doorsets / non-rated, fire, smoke (S) and sound rated **Page**

Single Acting doors non-rated	(40 mm)	2:1
Single Acting doors fire rating FD30S	(40 mm)	2:2
Single Acting doors fire rating FD30S, Rw 27dB	(40 mm)	2:3
Single Acting doors fire rating FD30S, Rw 33dB	(40 mm)	2:4
Single Acting doors fire rating FD30S, Rw 38dB	(62 mm)	2:5
Single Acting doors fire rating FD30S, Rw 43dB	(62 mm)	2:6
Single Acting doors fire rating FD60S	(62 mm)	2:7
Single Acting doors fire rating FD60S, Rw 38dB	(62 mm)	2:8
Frames Single Acting doors		2:9
Thresholds Single Acting doors Under cuts (Part 1)	(40/62 mm)	2:10
Drop down seals Single Acting doors (Part 2)	(40/62 mm)	2:11
Hardwood thresholds Single Acting doors (Part 3)	(40/62 mm)	2:12

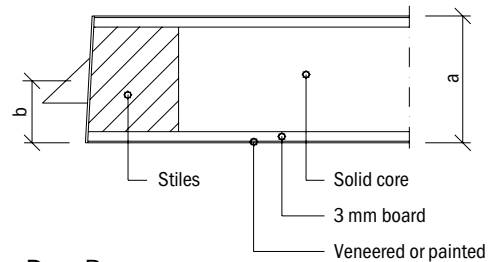
Single Acting doors

Non-rated

MODULE	FRAME OUTER DIM.		FRAME REBATE DIM.		DOOR LEAF DIM		CLEAR OPENING DIM.	
	WIDTH	HEIGHT	WIDTH	HEIGHT *	WIDTH	HEIGHT	a/90°	a/180°
7x21	686	2089	630	2061	626	2040	560	606
8x21	786	2089	730	2061	726	2040	660	706
9x21	886	2089	830	2061	826	2040	760	806
10x21	986	2089	930	2061	926	2040	860	906
11x21	1086	2089	1030	2061	1026	2040	960	1006
12x21	1186	2089	1130	2061	1126	2040	1060	1106
13x21	1286	2089	1230	2061	1226	2040	1160	1206
13x21	1286	2089	1230	2061	926+298	2040	1114	1206
14x21	1386	2089	1330	2061	926+398	2040	1214	1306
15x21	1486	2089	1430	2061	926+498	2040	1314	1406
16x21	1586	2089	1530	2061	762+762	2040	1414	1506
17x21	1686	2089	1630	2061	812+812	2040	1514	1606
18x21	1786	2089	1730	2061	862+862	2040	1614	1706
19x21	1886	2089	1830	2061	912+912	2040	1714	1806
20x21	1986	2089	1930	2061	962+962	2040	1814	1906

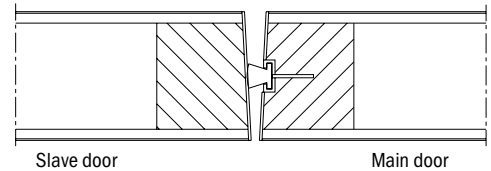
* As supplied (without threshold)

Standard version



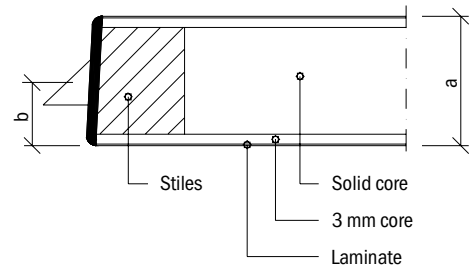
- Construction** Finished door thickness 40 mm.
Please see detail.
Surface mounted door closer can be mounted without extra reinforcement.
- Door leaf finish** Veneered, painted see page 1:2 or for Laminates see formica Door Range
- Door leaf edge** Veneered or painted: 2 long edges (Lock and hinge side).
- Edge lipping** Laminate door with 3 mm PVC lipping on 4 edges, grey (NCS S 2500), white (NCS S 0500), or wood effect of beech, birch, oak or mahogany.
- Glazed aperture** See page 1:12.
- Kick plate** See page 1:14 (optional).
- Frames** See page 2:9.
- Thresholds** See page 2:10.
- Ironmongery**
Hinges: 7-10M =3/3228 zinc plated.
11-13M =4/3278 zinc plated.
Lock: 565 zinc plated. Optional locks can be offered.
Striking plate: Zinc plated.
Flush bolt for door pair:
2 pcs flush bolts 30HZ.
Lock plate delivered not mounted.

Double door



- a and b measures** See page 1:11.
- Weight** Module 10: Door leaf abt. 40 kg.
93 mm wooden frame abt. 10 kg.

Laminate with PVC edge lipping



Single Acting doors

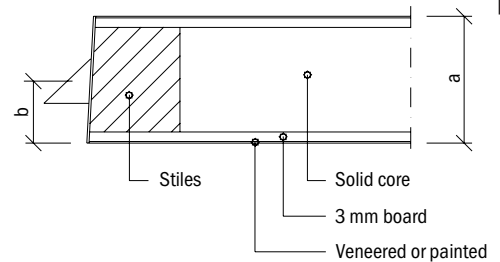
Fire rating FD30S

MODULE	FRAME OUTER DIM.		FRAME REBATE DIM.		DOOR LEAF DIM		CLEAR OPENING DIM.	
	WIDTH	HEIGHT	WIDTH	HEIGHT *	WIDTH	HEIGHT	a/90°	a/180°
7x21	686	2089	630	2061	626	2040	560	606
8x21	786	2089	730	2061	726	2040	660	706
9x21	886	2089	830	2061	826	2040	760	806
10x21	986	2089	930	2061	926	2040	860	906
11x21	1086	2089	1030	2061	1026	2040	960	1006
12x21	1186	2089	1130	2061	1126	2040	1060	1106
13x21	1286	2089	1230	2061	926+298	2040	1114	1206
14x21	1386	2089	1330	2061	926+398	2040	1214	1306
15x21	1486	2089	1430	2061	926+498	2040	1314	1406
16x21	1586	2089	1530	2061	762+762	2040	1414	1506
17x21	1686	2089	1630	2061	812+812	2040	1514	1606
18x21	1786	2089	1730	2061	862+862	2040	1614	1706
19x21	1886	2089	1830	2061	912+912	2040	1714	1806
20x21	1986	2089	1930	2061	962+962	2040	1814	1906

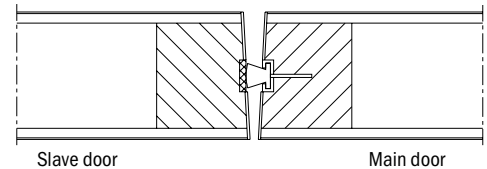
* As supplied (before undercut adjustment)

Construction	Finished door thickness 40 mm. Please see detail. Surface mounted door closer can be mounted without extra reinforcement.
Fire	The jambs of the wooden frame and the short edges of the door leaf and for double doors the long edge of the slave door are provided with intumescents.
Smoke control	Smoke seal in door frame rebated. Brush seal in meeting stile.
Door leaf finish	Veneered, painted see page 1:2 or for Laminates see formica Door Range
Door leaf edge	Veneered or painted: 2 long edges (Lock and hinge side).
Edge lipping	Laminate door with 3 mm PVC lipping on 4 edges, grey (NCS S 2500), white (NCS S 0500), or wood effect of beech, birch, oak or mahogany.
Glazed aperture	See page 1:12.
Kick plate	See page 1:14 (optional).
Frames	See page 2:9.
Thresholds	See page 2:10.
Ironmongery	Hinges: 7-10M =3/3228 zinc plated. 11-12M =4/3278 zinc plated. Lock: 565 zinc plated. Optional locks can be offered. Striking plate: Zinc plated. Flush bolt for door pair: 2 pcs flush bolts 30HZ. Lock plate delivered not mounted.
a and b measures	See page 1:11.
Weight	Module 10: Door leaf abt. 40 kg. 93 mm wooden frame abt. 10 kg.

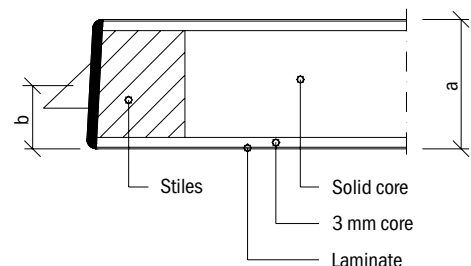
Standard version



Double door



Laminate with PVC edge lipping



2

Single Acting doors

Fire rating FD30S

Sound rating Rw 27dB

MODULE	FRAME OUTER DIM.		FRAME REBATE DIM.		DOOR LEAF DIM.		CLEAR OPENING DIM.	
	WIDTH	HEIGHT	WIDTH	HEIGHT*	WIDTH	HEIGHT*	a/90°	a/180°
7x21	686	2089	630	2061	626	2052	560	606
8x21	786	2089	730	2061	726	2052	660	706
9x21	886	2089	830	2061	826	2052	760	806
10x21	986	2089	930	2061	926	2052	860	906
11x21	1086	2089	1030	2061	1026	2052	960	1006
12x21	1186	2089	1130	2061	1126	2052	1060	1106

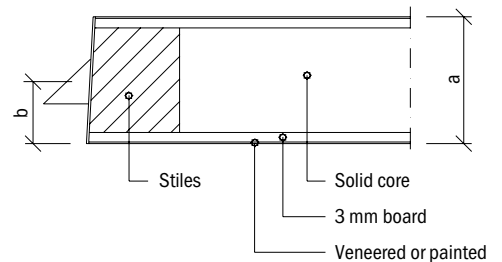
* As supplied (with drop down seal)

2

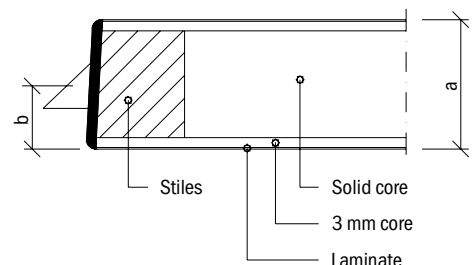
- Construction** Finished door thickness 40 mm.
Please see detail.
Surface mounted door closer can be mounted without extra reinforcement.
- Fire** The jambs of the wooden frame and the short edges of the door leaf are provided with intumescents.
- Smoke control** Smoke seal in door frame rebate.
- Sound** Sound rating Rw 27dB.
The frame is provided with sealing strips.
- Door leaf finish** Veneered, painted see page 1:2 or for Laminates see formica Door Range
- Door leaf edge** Veneered or painted: 2 long edges (Lock and hinge side).
- Edge lipping** Laminate door with 3 mm PVC lipping on 4 edges, grey (NCS S 2500), white (NCS S 0500), or wood effect of beech, birch, oak or mahogany
- Glazed aperture** See page 1:12.
- Kick plate** See page 1:14 (optional).
- Frames** See page 2:9.
- Thresholds** See page 2:11 (drop down seal included).
- Ironmongery**
Hinges: 7-10M =3/3228 zinc plated.
11-12M =4/3278 zinc plated.

Lock: 565 zinc plated. Optional locks can be offered.
Striking plate: Zinc plated.
- a and b measures** See page 1:11.
- Weight** Module 10: Door leaf abt. 40 kg.
93 mm wooden frame abt. 10 kg.

Standard version



Laminate with PVC edge lipping



Single Acting doors

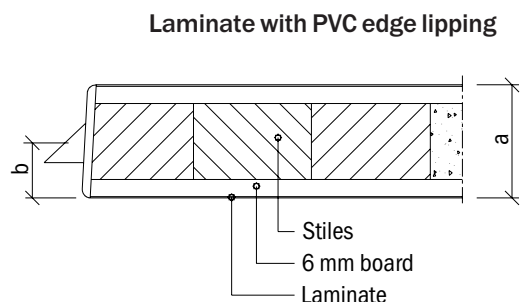
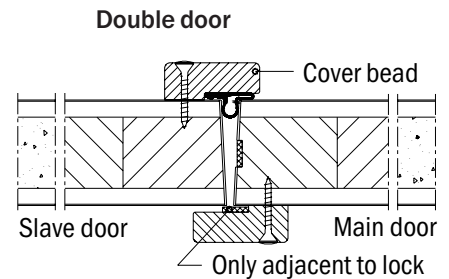
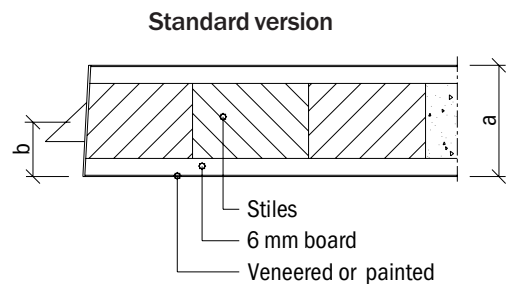
Fire rating FD30S

Sound rating Rw 33dB

MODULE	FRAME OUTER DIM.		FRAME REBATE DIM.		DOOR LEAF DIM		CLEAR OPENING DIM.	
	WIDTH	HEIGHT	WIDTH	HEIGHT*	WIDTH	HEIGHT*	a/90°	a/180°
7x21	686	2089	630	2061	626	2052	560	606
8x21	786	2089	730	2061	726	2052	660	706
9x21	886	2089	830	2061	826	2052	760	806
10x21	986	2089	930	2061	926	2052	860	906
11x21	1086	2089	1030	2061	1026	2052	960	1006
12x21	1186	2089	1130	2061	1126	2052	1060	1106
13x21	1286	2089	1230	2061	926+298	2052	1114	1206
14x21	1386	2089	1330	2061	926+398	2052	1214	1306
15x21	1486	2089	1430	2061	926+498	2052	1314	1406
16x21	1586	2089	1530	2061	762+762	2052	1414	1506
17x21	1686	2089	1630	2061	812+812	2052	1514	1606
18x21	1786	2089	1730	2061	862+862	2052	1614	1706
19x21	1886	2089	1830	2061	912+912	2052	1714	1806
20x21	1986	2089	1930	2061	962+962	2052	1814	1906

* As supplied (with drop down seal)

- Construction** Finished door thickness 40 mm.
Please see detail.
Surface mounted door closer can be mounted without extra reinforcement.
- Fire** The jambs of the wooden frame and the short edges of the door leaf and for double doors the long edge of the main door, are provided with intumescent.
- Smoke control** Smoke seal in door frame rebate.
- Sound** Sound rating Rw 33dB. The frame and the double doors meeting are provided with sealing strips.
- Door leaf finish** Veneered, painted see page 1:2 or for Laminates see formica Door Range
- Door leaf edge** Veneered or painted: 2 long edges (Lock and hinge side).
- Edge lipping** Laminate door with 3 mm PVC lipping on 4 edges, grey (NCS S 2500), white (NCS S 0500), or wood effect of beech, birch, oak or mahogany.
- Glazed aperture** See page 1:12.
- Kick plate** See page 1:14 (optional).
- Frames** See page 2:9.
- Thresholds** See page 2:11 (drop down seal included).
- Ironmongery**
Hinges: 7-10M =3/3228 zinc plated.
11-12M =4/3278 zinc plated.
Lock: 565 zinc plated. Optional locks can be offered.
Striking plate: Zinc plated.
Flush bolt for door pair:
2 pcs flush bolt 30HZ.
Lock plate delivered not mounted.
- a and b measures** See page 1:11.
- Weight** Module 10: Door leaf abt. 47 kg.
93 mm wooden frame abt. 10 kg.



2

Single Acting doors

Fire rating FD30S

Sound rating Rw 38dB

2

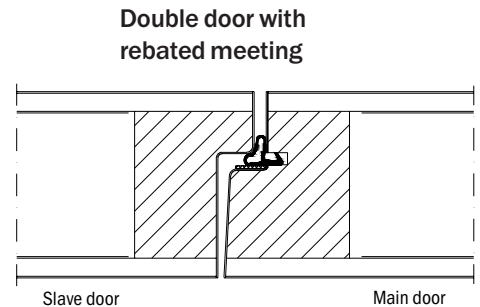
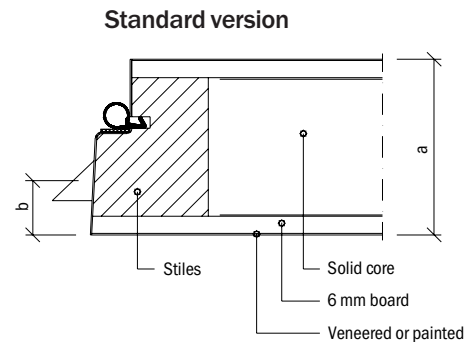
MODULE	FRAME OUTER DIM.		FRAME REBATE DIM.		DOOR LEAF DIM		CLEAR OPENING DIM.	
	WIDTH	HEIGHT	WIDTH	HEIGHT*	WIDTH	HEIGHT*	a/90°	a/180°
7x21	686	2089	630	2061	626	2052	538	606
8x21	786	2089	730	2061	726	2052	638	706
9x21	886	2089	830	2061	826	2052	738	806
10x21	986	2089	930	2061	926	2052	838	906
11x21	1086	2089	1030	2061	1026	2052	938	1006
12x21	1186	2089	1130	2061	1126	2052	1038	1106
13x21	1286	2089	1230	2061	926+298	2052	1078	1206
14x21	1386	2089	1330	2061	926+398	2052	1178	1306
15x21	1486	2089	1430	2061	926+498	2052	1278	1406
16x21	1586	2089	1530	2061	762+762	2052	1378	1506
17x21	1686	2089	1630	2061	812+812	2052	1478	1606
18x21	1786	2089	1730	2061	862+862	2052	1578	1706
19x21	1886	2089	1830	2061	912+912	2052	1678	1806
20x21	1986	2089	1930	2061	962+962	2052	1778	1906

* As supplied (with drop down seal)

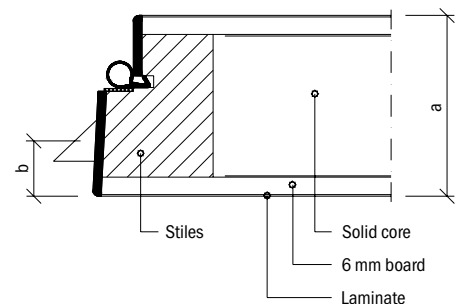
- Construction** Finished door thickness 62 mm.
Please see detail.
Surface mounted door closer can be mounted without extra reinforcement.
Concealed door closer optional.
- Fire** The door leaf is provided with intumescent on all edges and for double doors only the long edge of the main door at meeting stiles.
- Smoke control** Smoke seal in door leaf rebate.
- Sound** Sound rating Rw 38dB.
The door leaf is provided with sealing strips.
Double door sealing strip in meeting only in main door.
- Door leaf finish** Veneered, painted see page 1:2 or for Laminates see formica Door Range
- Door leaf edge** Veneered or painted: 2 long edges (Lock and hinge side).
- Edge lipping** Laminate door with 3 mm PVC lipping on 4 edges, grey (NCS S 2500), white (NCS S 0500), or wood effect of beech, birch, oak or mahogany.
- Glazed aperture** See page 1:12.
- Kick plate** See page 1:14 (optional).
- Frames** See page 2:9.
- Thresholds** See page 2:11 (drop down seal included).
- Ironmongery**
Hinges: 7-10M =3/3228 zinc plated.
11-12M =4/3278 zinc plated.

Lock: 565 zinc plated. Optional locks can be offered.
Striking plate: Zinc plated.

Flush bolt for door pair:
2 pcs flush bolts 30HZ.
Lock plate delivered not mounted.
- a and b measures** See page 1:11.
- Weight** Module 10: Door leaf abt. 54 kg.
93 mm wooden frame abt. 10 kg.



Laminate with PVC edge lipping



Single Acting doors

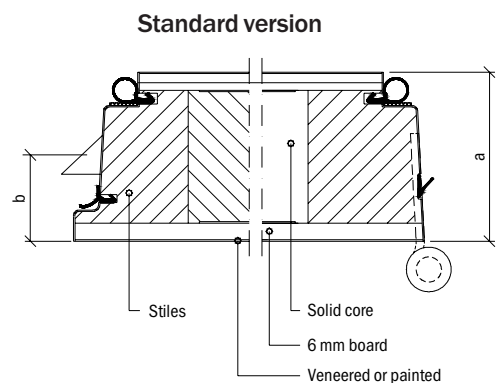
Fire rating FD30S

Sound rating Rw 43dB

MODULE	FRAME OUTER DIM.		FRAME REBATE DIM.		DOOR LEAF DIM.		CLEAR OPENING DIM.	
	WIDTH	HEIGHT	WIDTH	HEIGHT *	WIDTH	HEIGHT	a/90°	a/180°
7x21	686	2089	630	2046	626	2040	545	606
8x21	786	2089	730	2046	726	2040	645	706
9x21	886	2089	830	2046	826	2040	745	806
10x21	986	2089	930	2046	926	2040	845	906
11x21	1086	2089	1030	2046	1026	2040	945	1006
12x21	1186	2089	1130	2046	1126	2040	1045	1106

* As supplied (with hardwood threshold)

Construction	Finished door thickness 62 mm. Please see detail. Surface mounted door closer can be mounted without extra reinforcement. Concealed door closer optional.
Fire	The door leaf is provided with intumescent on all edges.
Smoke control	Smoke seal in door leaf rebate.
Sound	Sound rating Rw 43dB. The door leaf is provided with double sealing strips on all edges.
Door leaf finish	Veneered, painted see page 1:2 or for Laminates see formica Door Range
Door leaf edge	Veneered or painted: 2 long edges (Lock and hinge side).
Edge lipping	Laminate door with 6 mm solid timber lipping on 4 edges, beech, birch, oak, and pine.
Glazed aperture	Not available.
Kick plate	See page 1:14 (optional).
Frames	See page 2:9.
Thresholds	See page 2:12 (hardwood threshold included).
Ironmongery	Hinges: 7-10M =3/3225-51 zinc plated. 11-12M =4/3225-57 zinc plated. Lock: 565 zinc plated. Optional locks can be offered. Striking plate: Zinc plated.
a and b measures	See page 1:11.
Weight	Module 10: Door leaf abt. 64 kg. 93 mm wooden frame abt. 10 kg.



2

Single Acting doors

Fire rating FD60S

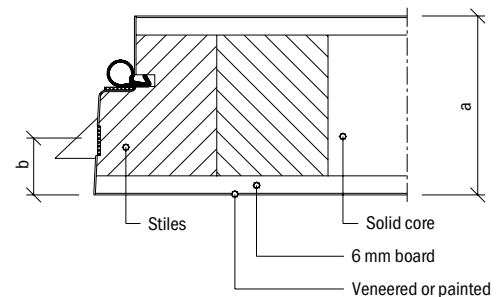
2

MODULE	FRAME OUTER DIM.		FRAME REBATE DIM.		DOOR LEAF DIM		CLEAR OPENING DIM.	
	WIDTH	HEIGHT	WIDTH	HEIGHT *	WIDTH	HEIGHT	a/90°	a/180°
7x21	686	2089	630	2061	626	2040	538	606
8x21	786	2089	730	2061	726	2040	638	706
9x21	886	2089	830	2061	826	2040	738	806
10x21	986	2089	930	2061	926	2040	838	906
11x21	1086	2089	1030	2061	1026	2040	938	1006
13x21	1286	2089	1230	2061	926+298	2040	1078	1206
14x21	1386	2089	1330	2061	926+398	2040	1178	1306
15x21	1486	2089	1430	2061	926+498	2040	1278	1406
16x21	1586	2089	1530	2061	762+762	2040	1378	1506
17x21	1686	2089	1630	2061	812+812	2040	1478	1606
18x21	1786	2089	1730	2061	862+862	2040	1578	1706
19x21	1886	2089	1830	2061	912+912	2040	1678	1806
20x21	1986	2089	1930	2061	962+962	2040	1778	1906

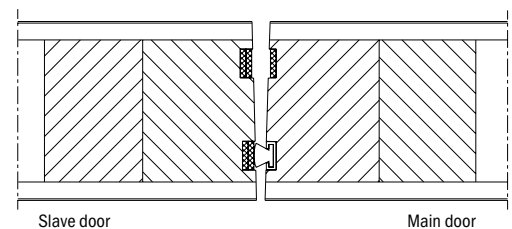
* As supplied (before undercut adjustment)

- Construction** Finished door thickness 62 mm.
Please see detail.
Surface mounted door closer can be mounted without extra reinforcement.
Concealed door closer optional.
- Fire** The jamb of the wooden frame and all edges of the door leaf is provided with intumescents.
- Smoke control** Smoke seal in door leaf rebate.
Brush seal in meeting stile.
- Door leaf finish** Veneered, painted see page 1:2 or for Laminates see formica Door Range
- Door leaf edge** Veneered or painted: 2 long edges (Lock and hinge side).
- Edge lipping** Laminate door with 3 mm PVC lipping on 4 edges, grey (NCS S 2500), white (NCS S 0500), or wood effect of beech, birch, oak or mahogany.
- Glazed aperture** See page 1:12.
- Kick plate** See page 1:14 (optional).
- Frames** See page 2:9.
- Thresholds** See page 2:10.
- Ironmongery**
Hinges: 7-10M =3/3228 zinc plated.
11M =4/3278 zinc plated.
Lock: 565 zinc plated. Optional locks can be offered.
Striking plate: Zinc plated.
Flush bolt for door pair:
2 pcs flush bolts 30HZ.
Lock plate delivered not mounted.
- a and b measures** See page 1:11.
- Weight** Module 10: Door leaf abt. 54 kg.
93 mm wooden frame abt. 10 kg.

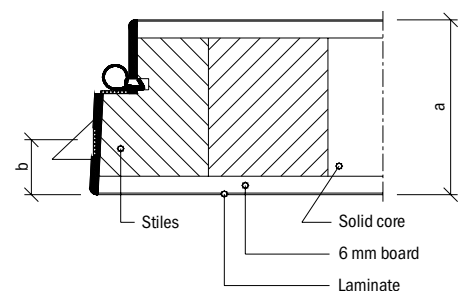
Standard version



Double door with flush meeting



Laminate with PVC edge lipping



Single Acting doors

Fire rating FD60S

Sound rating Rw 38dB

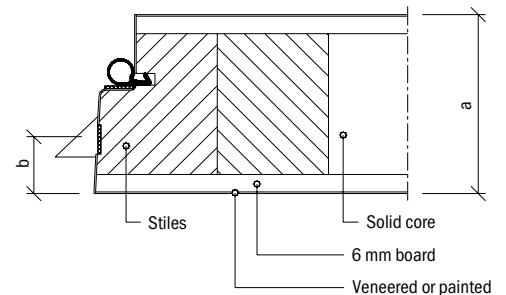
MODULE	FRAME OUTER DIM.		FRAME REBATE DIM.		DOOR LEAF DIM		CLEAR OPENING DIM.	
	WIDTH	HEIGHT	WIDTH	HEIGHT*	WIDTH	HEIGHT*	a/90°	a/180°
7x21	686	2089	630	2061	626	2052	538	606
8x21	786	2089	730	2061	726	2052	638	706
9x21	886	2089	830	2061	826	2052	738	806
10x21	986	2089	930	2061	926	2052	838	906
11x21	1086	2089	1030	2061	1026	2052	938	1006
13x21	1286	2089	1230	2061	926+298	2052	1078	1206
14x21	1386	2089	1330	2061	926+398	2052	1178	1306
15x21	1486	2089	1430	2061	926+498	2052	1278	1406
16x21	1586	2089	1530	2061	762+762	2052	1378	1506
17x21	1686	2089	1630	2061	812+812	2052	1478	1606
18x21	1786	2089	1730	2061	862+862	2052	1578	1706
19x21	1886	2089	1830	2061	912+912	2052	1678	1806
20x21	1986	2089	1930	2061	962+962	2052	1778	1906

* As supplied (with drop down seal)

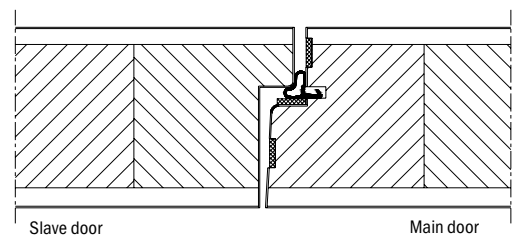
2

- Construction** Finished door thickness 62 mm.
Please see detail.
Surface mounted door closer can be mounted without extra reinforcement.
Concealed door closer optional.
- Fire** The jamb of the wooden frame and all edges of the door leaf is provided with intumescent, and for double doors only the long edge of the main door at meeting stiles.
- Smoke control** Smoke seal in door leaf rebate.
- Sound** Sound rating Rw 38dB. The door leaf is provided with sealing strips on all edges.
- Door leaf finish** Veneered, painted see page 1:2 or for Laminates see formica Door Range
- Door leaf edge** Veneered or painted: 2 long edges (Lock and hinge side).
- Edge lipping** Laminate door with 3 mm PVC lipping on 4 edges, grey (NCS S 2500), white (NCS S 0500), or wood effect of beech, birch, oak or mahogany.
- Glazed aperture** See page 1:12.
- Kick plate** See page 1:14 (optional).
- Frames** See page 2:9.
- Thresholds** See page 2:11 (drop down seal included).
- Ironmongery**
Hinges: 7-10M =3/3228 zinc plated.
11M =4/3278 zinc plated.
Lock: 565 zinc plated. Optional locks can be offered.
Striking plate: Zinc plated.
Flush bolt for door pair:
2 pcs flush bolts 30HZ.
Lock plate delivered not mounted.
- a and b measures** See page 1:11.
- Weight** Module 10: Door leaf abt. 54 kg.
93 mm wooden frame abt. 10 kg.

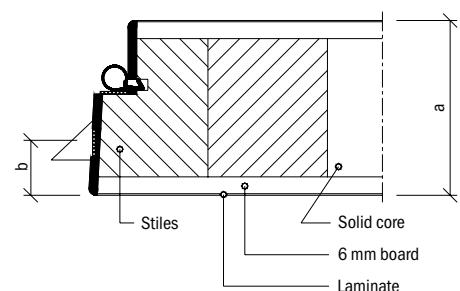
Standard version



Double door with rebated meeting



Laminate with PVC edge lipping



Frames Single Acting doors

Wooden frames

2

Dimensions Frame thickness: 40 mm.
 Frame depth standard: 93, 96, 100, 110, 118, 121, 125, 128, 147, 150, 160 and 170 mm.
 Other frame depths: 68, 71, 75, 81, 86, 105, 115, 180 and 200 mm.
 (Veneered frame max 170 mm.)

Fire and Smoke Non-rated.
 Fire rating: FD30S and FD60S.
 Smoke seal in FD30S.
 * Intumescent acc. to valid product information.

Sound Sound rating Rw 27dB, Rw 33dB, Rw 38dB and Rw 43dB.

Frame finish Wood frame : Untreated, Primed, Painted, Lacquered,
 Veneered frame : see page 1:2

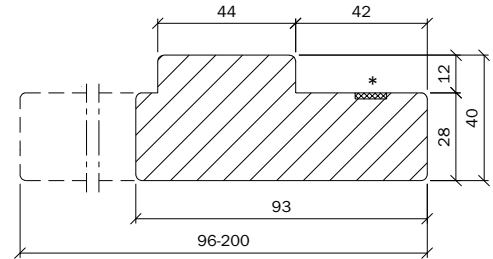
Thresholds See page 2:12.

Mounting holes All surface treated frames are predrilled. See detail.
 As an alternative 14 mm through drilling can be offered.
 Untreated frame are not predrilled!

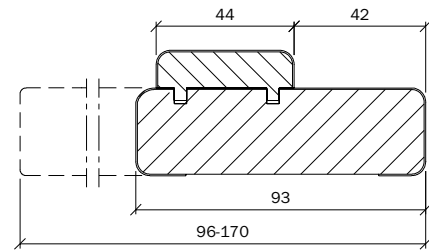
Cover plugs: White frames with white plugs, other colours with transparent plugs.
 Veneered frames with plugs in similar colour.

Others Ironmongery, intumescents, sealing strips etc.
 See under each type of door.

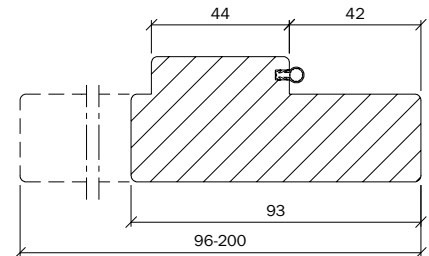
Wooden frame



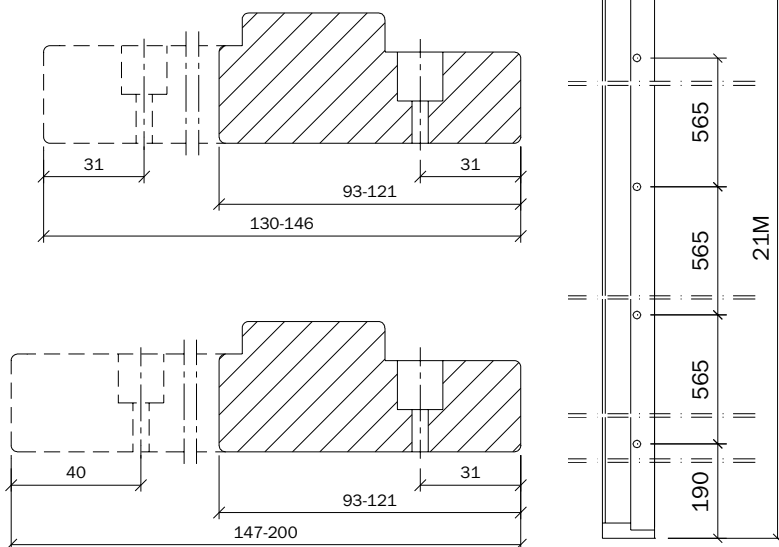
Veneered frame



Frame with sealing strip (Rw 27dB and Rw 33dB)



Location of mounting holes (except untreated frames)



Thresholds Single Acting doors

Under cuts (Part 1)

Please note!

Under cuts noted below are for frames placed directly on the flush finished floor.

If fitted otherwise consideration must be taken to the resulting distance to the bottom of the door leaf.

This can be done by cutting frame jambs or by using door leaves with adjusted height.

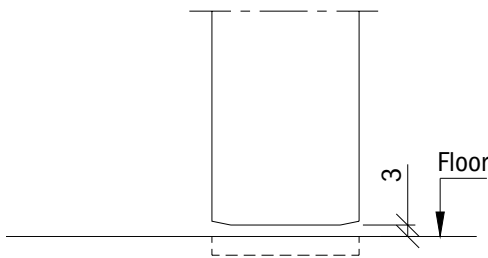
NB! To comply with fire certification, FD30S and FD60S must have a max. 3 mm under cut.

2

40 mm doors

Without threshold - Standard supplied with 18 mm under cut.

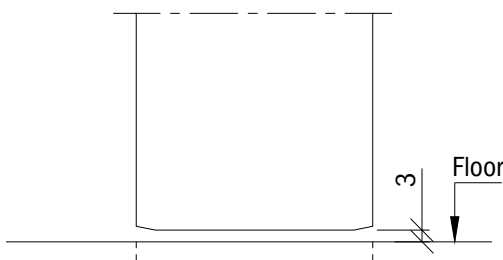
Non-rated	With 18 mm under cut.
Fire and smoke	FD30S with 3 mm under cut by adding 15 mm to door leaf in FACTORY
Fire and smoke	FD30S with 3 mm under cut by cutting 15 mm off bottom of frame ON SITE.



62 mm doors

Without threshold - Standard supplied with 18 mm under cut.

Fire and smoke	FD30S and FD60S with 3 mm under cut by adding 15 mm to door leaf in FACTORY
Fire and smoke	FD30S and FD60S with 3 mm under cut by cutting 15 mm off bottom of frame ON SITE.



Drop down seals Single Acting doors

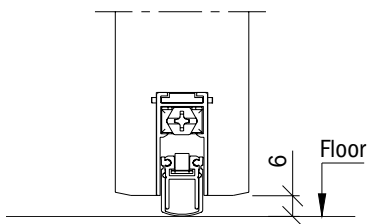
(Part 2)

40 mm doors

Drop down seal included as standard in Rw 27dB and Rw 33dB doors. (Door made longer by 12 mm).

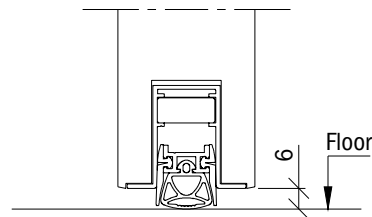
Drop down seal

Fire and smoke FD30S.
Sound Rw 27dB, Rw 33dB.



Drop down seal (only double door)

Fire and smoke FD30S.
Sound Rw 33dB.

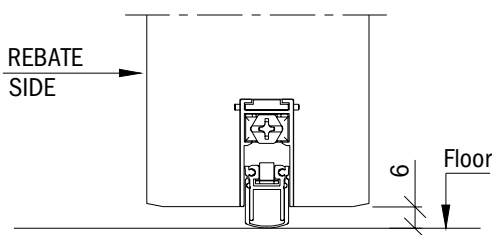


62 mm doors

Drop down seal included as standard in Rw 38dB doors. (Door made longer by 12 mm).

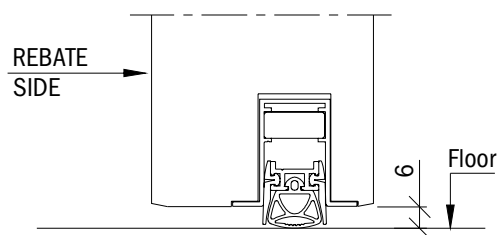
Drop down seal

Fire and smoke FD30S, FD60S.
Sound Rw 38dB.



Drop down seal (only double door)

Fire and smoke FD30S, FD60S.
Sound Rw 38dB.



2

Hardwood Thresholds Single Acting doors

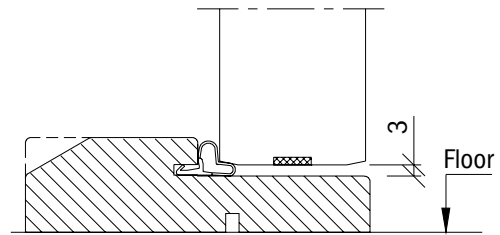
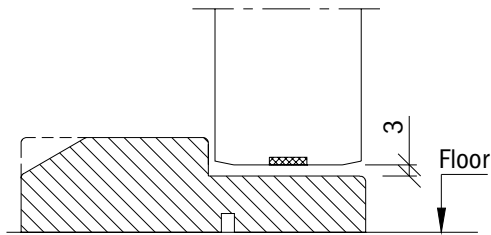
(Part 3)

40 mm doors

Bevelled hardwood threshold 25 mm: Optional in Rw 27dB and Rw 33dB doors.

Fire and smoke	FD30S.
Finish	Clear lacquered oak.
Threshold depth	Same as frame depth up to 93 mm.

Fire and smoke	FD30S.
Sound	Rw 27dB, Rw 33dB.
Finish	Clear lacquered oak.
Threshold depth	Same as frame depth up to 93 mm.



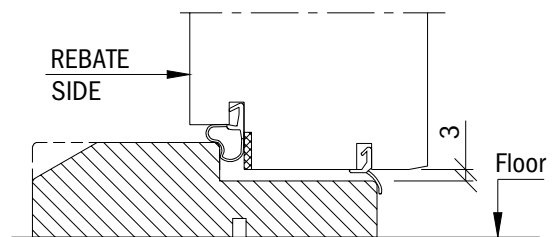
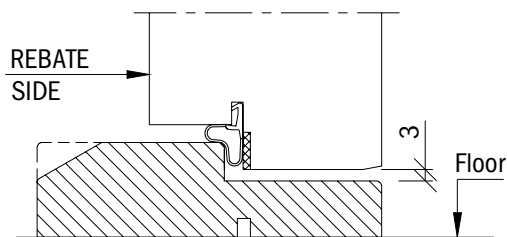
2

62 mm doors

Bevelled hardwood threshold 25 mm: Optional in Rw 38dB doors and standard in Rw 43dB doors.

Fire and smoke	FD30S, FD60S.
Sound	Rw 38dB.
Finish	Clear lacquered oak.
Threshold depth	Same as frame depth up to 93 mm.

Fire and smoke	FD30S.
Sound	Rw 43dB.
Finish	Clear lacquered oak.
Threshold depth	Same as frame depth up to 93 mm.



Contents

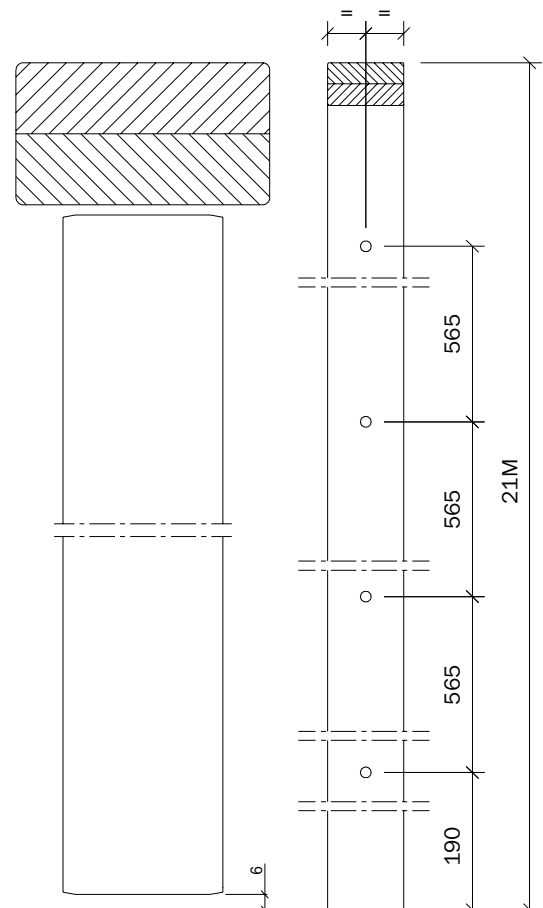
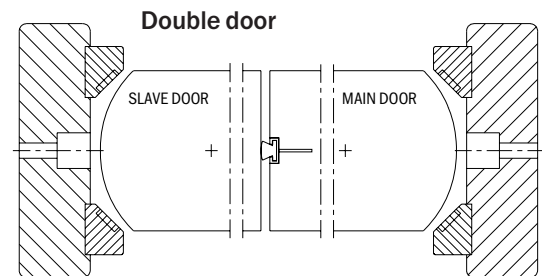
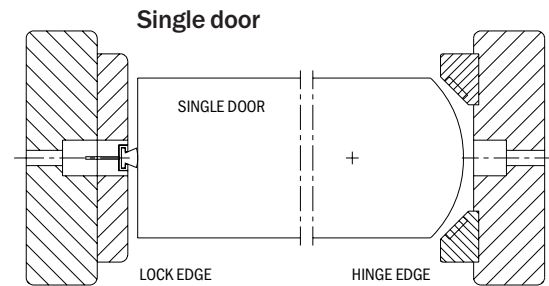
G eneral	1
S ingle Acting doorsets / non-rated, fire, smoke (S) and sound rated	2
D ouble Acting doorsets / non-rated, fire and smoke (S) rated	3

D ouble Acting doorsets / non-rated, fire and smoke (S) rated	Page
Double Acting doorsets non-rated (62 mm)	3:1
Double Acting doorsets fire rating FD30S (62 mm)	3:2
Double Acting doorsets fire rating FD60S (62 mm)	3:3
Frames Double Acting doorsets	3:4

Double Acting doorsets

Non-rated

MODULE	FRAME OUTER DIM.		CLEAR OPENING DIM	DOOR LEAF DIM	
	WIDTH	HEIGHT	a/90°	WIDTH	HEIGHT
7x21	686	2092	539	610	2026
8x21	786	2092	639	710	2026
9x21	886	2092	739	810	2026
10x21	986	2092	839	910	2026
11x21	1086	2092	939	1010	2026
15x21	1486	2092	1272	910+510	2026
17x21	1686	2092	1472	910+710	2026
17x21	1686	2092	1472	810+810	2026
18x21	1786	2092	1572	860+860	2026
19x21	1886	2092	1672	910+910	2026
20x21	1986	2092	1772	960+960	2026



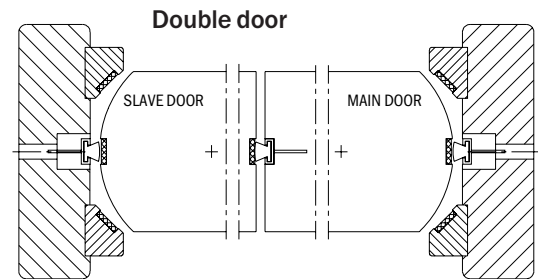
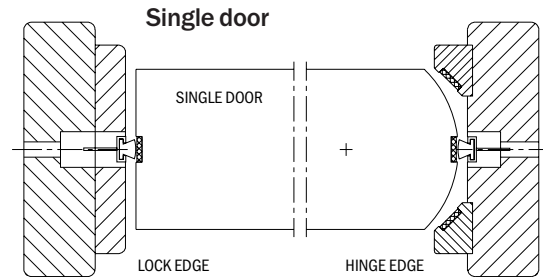
- Construction** Finished door thickness 62 mm.
Please see detail.
Double rails/stiles on all edges of the door leaf.
- Door leaf finish** Veneered, painted see page 1:2 or
for Laminates see formica Door Range
- Door leaf edge** All finishes: Solid timber on hinge edge.
Veneered: Veneered on lock edge.
Painted: Painted on lock edge.
- Edge lipping** Laminate door with 3 mm PVC lipping on
lock edge, grey (NCS S 2500), white (NCS S 0500),
or wood effect of beech, birch, oak or mahogany.
- Glazed aperture** See page 1:12.
- Kick plate** See page 1:14 (optional).
- Frames** See figure and 3:4.
- Ironmongery** No ironmongery included.
Concealed door closer optional.
- Weight** Module 10: Door leaf abt. 54 kg.
93 mm wooden frame abt. 10 kg.
- Undercut** Standard supplied with 6 mm undercut.

3

Double Acting doorsets

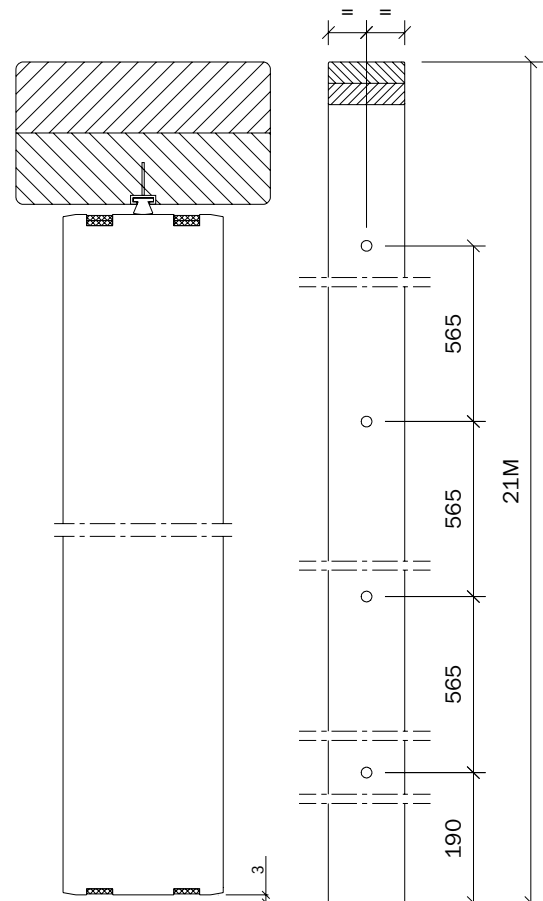
Fire rating FD30S

MODULE	FRAME OUTER DIM.		CLEAR OPENING DIM	DOOR LEAF DIM	
	WIDTH	HEIGHT	a/90°	WIDTH	HEIGHT
7x21	686	2092	539	610	2026
8x21	786	2092	639	710	2026
9x21	886	2092	739	810	2026
10x21	986	2092	839	910	2026
11x21	1086	2092	939	1010	2026
15x21	1486	2092	1272	910+510	2026
17x21	1686	2092	1472	910+710	2026
17x21	1686	2092	1472	810+810	2026
18x21	1786	2092	1572	860+860	2026
19x21	1886	2092	1672	910+910	2026
20x21	1986	2092	1772	960+960	2026



3

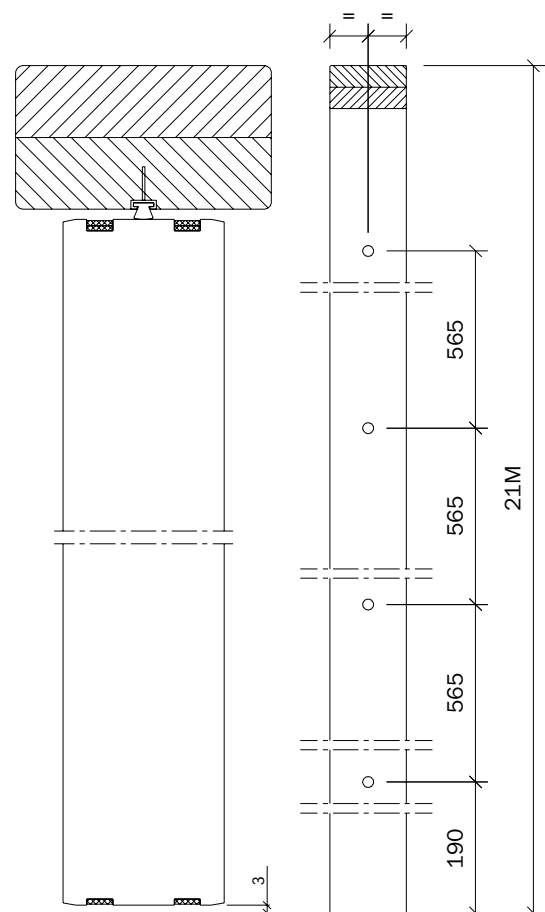
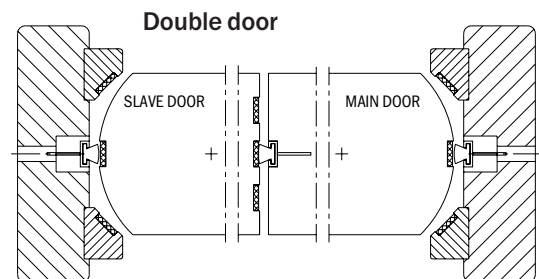
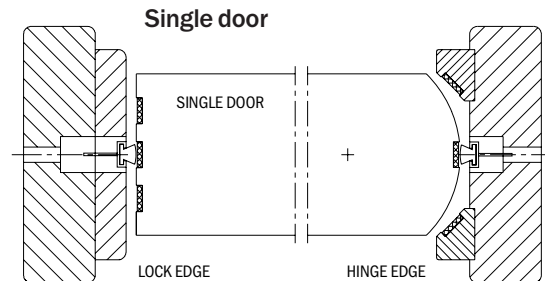
- Construction** Finished door thickness 62 mm.
Please see detail.
Double rails/stiles on all edges of the door leaf.
- Fire** The hinge edge jambs of the wooden frame and all edges of the door leaf and for double doors only the long edge of the slave door at meeting stiles has intumescent.
- Smoke control** Smoke seal in door frame rebate and main leaf long edge.
- Door leaf finish** Veneered, painted see page 1:2 or
for Laminates see formica Door Range
- Door leaf edge** All finishes: Solid timber on hinge edge.
Veneered: Veneered on lock edge.
Painted: Painted on lock edge.
- Edge lipping** Laminate door with 3 mm PVC lipping on lock edge, grey (NCS S 2500), white (NCS S 0500), or wood effect of beech, birch, oak or mahogany.
- Glazed aperture** See page 1:12.
- Kick plate** See page 1:14 (optional).
- Frames** See figure and 3:4.
- Ironmongery** No ironmongery included.
Concealed door closer optional.
- Weight** Module 10: Door leaf abt. 54 kg.
 93 mm wooden frame abt. 10 kg.
- Undercut** Standard supplied with 6 mm undercut.
- FD30S requires to have maximum 3 mm gap between FFL and bottom of door leaf. This can be achieved by adding to door leaf in factory or by cutting the bottom of the frame on site.



Double Acting doorsets

Fire rating FD60S

MODULE	FRAME OUTER DIM.		CLEAR OPENING DIM	DOOR LEAF DIM	
	WIDTH	HEIGHT	a/90°	WIDTH	HEIGHT
7x21	686	2092	539	610	2026
8x21	786	2092	639	710	2026
9x21	886	2092	739	810	2026
10x21	986	2092	839	910	2026
11x21	1086	2092	939	1010	2026
15x21	1486	2092	1272	910+510	2026
17x21	1686	2092	1472	910+710	2026
17x21	1686	2092	1472	810+810	2026
18x21	1786	2092	1572	860+860	2026
19x21	1886	2092	1672	910+910	2026



- Construction** Finished door thickness 62 mm.
Please see detail.
Double rails/stiles on all edges of the door leaf.
- Fire** The hinge edge jambs of the wooden frame and all edges of the door leaf and for double doors only the long edge of the slave door at meeting stiles has intumescent.
- Smoke control** Smoke seal in door frame rebate and main leaf long edge.
- Door leaf finish** Veneered, painted see page 1:2 or for Laminates see formica Door Range
- Door leaf edge** All finishes: Solid timber on hinge edge.
Veneered: Veneered on lock edge.
Painted: Painted on lock edge.
- Edge lipping** Laminate door with 3 mm PVC lipping on lock edge, grey (NCS S 2500), white (NCS S 0500), or wood effect of beech, birch, oak or mahogany.
- Glazed aperture** See page 1:12.
- Kick plate** See page 1:14 (optional).
- Frames** See figure and 3:4.
- Ironmongery** No ironmongery included.
Concealed door closer optional.
- Weight** Module 10: Door leaf abt. 54 kg.
93 mm wooden frame abt. 10 kg.
- Undercut** Standard supplied with 6 mm undercut.
- FD60S requires to have maximum 3 mm gap between FFL and bottom of door leaf. This can be achieved by adding to door leaf in factory or by cutting the bottom of the frame on site.

Frames Double Acting doorsets

Wooden frames

Construction Please see detail.
Painted rating D.
Untreated/stained/lacquered: Rating C, veneered: Rating A.

Dimensions Frame thickness: Jambs 28 mm + 12 mm profiles and Head 56 mm.
Frame depth standard: 100, 110, 118, 121, 125, 128, 147, 150, 160 and 170 mm.

Fire and Smoke Non-rated.
Fire rating: FD30S and FD60S.
Smoke seal in FD30S and FD60S.
Intumescent acc. to valid product information.

Frame finish Wooden frame: Painted or untreated.

Thresholds Standard, no thresholds.

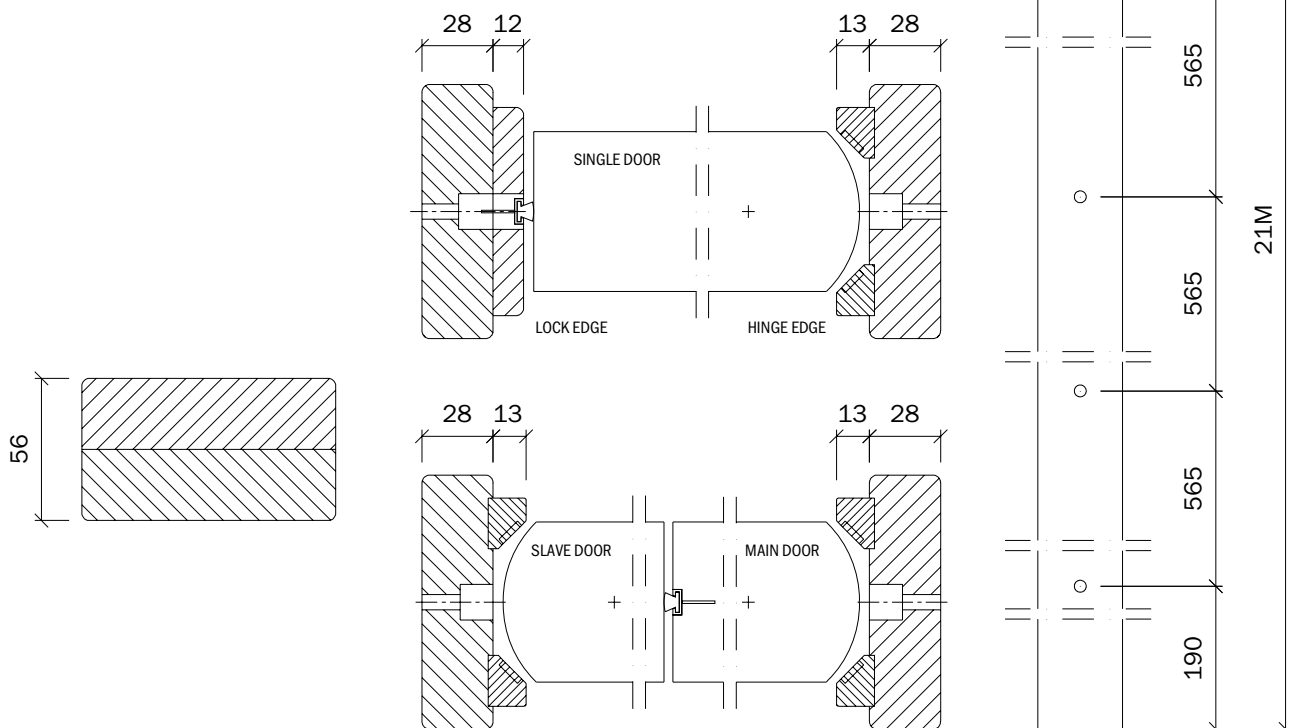
Mounting holes All surface treated frames are predrilled. See detail.
As an alternative 14 mm through drilling can be offered.
Untreated frame are not predrilled!

Cover plugs: White frames with white plugs, other colours with transparent plugs.
Veneered frames with plugs in similar colour.

Others Intumescents, sealing strips etc.
See under each type of door.
No ironmongery supplied.

Location of mounting holes

3



A fully certified *high-performance* doorset solution from Sweden

The Scandinavian building industry is geared towards prefabrication most factories have been built to produce products more easily identified with an engineering culture than a joinery background.

Production methods, design and product development are totally focused on delivering precision made system 'doorsets' which deliver accuracy and speed on installation.

The Swedoor high quality doorset is produced in Europe's largest manufacturing capability. Door, frame, hinge, lockcase and door blades are all precision produced and fitted under factory conditions, guaranteeing a remarkable degree of accuracy. Swedoor fully certified doorset solutions deliver impressive performance, long lasting durability, and unbeatable value for money.

For volume orders, reliability of supply and delivery is needed. We deliver to site to suit your build schedule. Scandinavian testing on products meets and exceeds British Standards, so that you have a product you can trust from a supplier who puts their customers ahead of the manufacturing process.

Why composite doorsets?

The Swedoor doorsets for public buildings are made from a range of different materials depending on the application. The door is suitable for schools, hospitals and laboratories, hotels and offices. It can be supplied in a very wide range of finishes – including hardwood veneers and coloured laminates in many choices. Laminate finishes are supplied with high impact resistant PVC lippings which are available in a choice of 7 finishes. Doorset materials and construction including glazed panels are all fully tested for fire, smoke and acoustic ratings for all types of buildings.

Test certification is available from recognised Scandinavian testing companies for:

- Fire resistance up to 60 minutes
- Sound insulation up to 44db
- Stability and durability of the product

The products are tested in the factory for impact resistance, resistance to general wear and tear, slamming, fire and sound insulation. Locks, cylinders, handles and hinges are provided by ASSA-Abloy, one of the world's largest ironmongery producers.

Timber used in the composites to produce doorsets is supplied from renewable sources.



ADW

Architectural
Doors &
Windows
Limited

Architectural Doors & Windows Ltd
9 South Wardpark Place
Wardpark South
Cumbernauld G67 3HX
Tel : 01236 780022 Fax : 01236 780021
Email : info@adwlimited.co.uk
Web : www.adwlimited.co.uk